

**CANADIAN CONCRETE MASONRY  
PRODUCERS ASSOCIATION**

**LEVY FUND**

**Financial Statements  
(Unaudited - See Notice to Reader)**

**Second Quarter ended June 30, 2011**



**CANADIAN CONCRETE MASONRY PRODUCERS ASSOCIATION  
LEVY FUND  
Contents  
(Unaudited - See Notice to Reader)  
June 30, 2011**

<b>Notice to Reader</b> .....	1
<b>Financial Statements</b>	
Statement of Financial Position .....	2
Statement of Changes in Net Assets .....	3
Statement of Revenue and Expenses .....	4
Expenses .....	5
Note to Financial Statements .....	6 - 8
<b>Block Sales Report</b> .....	9 - 10



**DIXON, GORDON & CO. LLP**  
CHARTERED ACCOUNTANTS

July 21, 2011

## **NOTICE TO READER**

On the basis of information provided by management, we have compiled the statement of financial position of the Levy Fund of Canadian Concrete Masonry Producers Association as at June 30, 2011 and the statements of revenue and expenses and changes in net assets for the six months then ended.

We have not performed an audit or a review engagement in respect of these financial statements and accordingly, we express no assurance thereon.

Readers are cautioned that these statements may not be appropriate for their purposes.

Respectfully submitted,

*Dixon, Gordon + Co. LLP*

CHARTERED ACCOUNTANTS  
Licensed Public Accountants  
Toronto, Canada

**CANADIAN CONCRETE MASONRY PRODUCERS ASSOCIATION  
LEVY FUND  
Statement of Financial Position  
(Unaudited - See Notice to Reader)  
June 30, 2011**

	<b>June 30 2011</b>	<b>December 31 2010</b>	<b>June 30 2010</b>
		(Audited)	
<b>Assets</b>			
Cash (a)	\$ 517,836	\$ 397,808	\$ 1,140,487
Investment - Guaranteed investment certificates	2,048,395	2,040,059	1,032,649
Accrued levy fees	469,720	466,926	502,032
Prepaid expense	-	2,066	-
	<b>\$ 3,035,951</b>	<b>\$ 2,906,859</b>	<b>\$ 2,675,168</b>
<b>Liabilities</b>			
Accounts payable	\$ 48,226	\$ 39,152	\$ 45,885
Accrued liabilities	28,467	70,535	24,600
Sales tax payable	31,644	26,203	12,200
	<b>108,337</b>	<b>135,890</b>	<b>82,685</b>
<b>Commitments</b> (pages 6-8)			
<b>Net assets</b>			
Net assets internally restricted (page 3)	2,927,614	2,770,969	2,592,483
	<b>\$ 3,035,951</b>	<b>\$ 2,906,859</b>	<b>\$ 2,675,168</b>

(a) Cash balance in bank account as at June 30, 2011 was \$489,121.

See accompanying note

**CANADIAN CONCRETE MASONRY PRODUCERS ASSOCIATION  
LEVY FUND**

**Statement of Changes in Net Assets  
(Unaudited - See Notice to Reader)**

**For the three and six months ended June 30, 2011**

	Second Quarter		Year-to-date	
	2011	2010	2011	2010
<b>Net assets, beginning of period</b>	<b>\$ 2,636,141</b>	\$ 2,348,201	<b>\$ 2,770,969</b>	\$ 2,377,433
Excess of revenue over expenses (page 4)	<b>291,474</b>	244,282	<b>156,645</b>	215,050
<b>Net assets, end of period</b>	<b>\$ 2,927,615</b>	\$ 2,592,483	<b>\$ 2,927,614</b>	\$ 2,592,483

See accompanying note

**CANADIAN CONCRETE MASONRY PRODUCERS ASSOCIATION  
LEVY FUND**

**Statement of Revenue and Expenses  
(Unaudited - See Notice to Reader)**

**For the three and six months ended June 30, 2011**

	Second Quarter		Year-to-date	
	2011	2010	2011	2010
<b>Revenue</b>				
Levy fees	\$ 469,720	\$ 502,032	\$ 814,488	\$ 869,439
Interest	2,900	1,913	9,321	3,805
	<b>472,620</b>	503,945	<b>823,809</b>	873,244
<b>Expenses (page 5)</b>				
Technical programs	149,881	187,409	540,917	489,709
Advertising and promotion	24,139	65,868	109,614	156,973
General and administrative	7,126	6,386	16,633	11,512
	<b>181,146</b>	259,663	<b>667,164</b>	658,194
<b>Excess of revenue over expenses</b>	<b>\$ 291,474</b>	\$ 244,282	<b>\$ 156,645</b>	\$ 215,050

See accompanying note

**CANADIAN CONCRETE MASONRY PRODUCERS ASSOCIATION  
LEVY FUND**

**Expenses**

**(Unaudited - See Notice to Reader)**

**For the three and six months ended June 30, 2011**

	Second Quarter		Year-to-date	
	2011	2010	2011	2010
<b>Technical programs</b>				
Consulting fees	\$ 80,150	\$ 76,750	\$ 143,300	\$ 139,800
University sponsorships	-	-	106,000	100,000
Design software support contribution Centre for Architecture - Athabasca University	-	-	100,750	-
	-	50,000	50,000	50,000
National training fund contribution	25,000	25,000	50,000	50,000
Consulting expenses	21,459	14,998	31,575	20,675
Canadian Masonry Contractors Association (CMCA) conference sponsorship	-	-	-	28,185
Training Centre block delivery	6,694	10,417	27,714	35,229
Design software development contribution Canadian Standards Association (CSA) A165 Standard development	-	-	-	24,593
	-	-	15,000	15,000
National Research Council (NRC) research Cement study	13,590	-	13,590	-
	-	-	-	10,000
Masonry Design Awards Foundation Project	-	10,000	-	10,000
	-	244	-	4,795
Wall Drainage Project (NRC)	2,988	-	2,988	-
Educational tools	-	-	-	1,432
	\$ 149,881	\$ 187,409	\$ 540,917	\$ 489,709
<b>Advertising and promotion</b>				
MasonryWorx Association fees	\$ -	\$ -	\$ 50,000	\$ 50,000
NCMA fees	15,866	16,978	27,461	29,299
MasonryWorx Association sponsorship	-	25,000	-	25,000
Masonry Alliance for Codes and Standards membership	-	-	12,029	12,945
North American Masonry Conference sponsorship	-	5,164	10,029	10,384
The Masonry Society sponsorship - North American Masonry Conference	4,880	-	4,880	-
Website	-	1,050	-	3,150
General advertising	1,000	17,676	2,822	25,058
The Masonry Society membership fees	1,400	-	1,400	-
Masonry Executives Council fees	993	-	993	1,137
	\$ 24,139	\$ 65,868	\$ 109,614	\$ 156,973
<b>General and administrative</b>				
Accounting and legal	\$ 5,450	\$ 5,697	\$ 12,450	\$ 10,650
Travel and meetings	1,313	14	3,528	14
Postage and courier	285	666	530	827
Bank charges	78	9	125	21
	\$ 7,126	\$ 6,386	\$ 16,633	\$ 11,512

See accompanying note

# CANADIAN CONCRETE MASONRY PRODUCERS ASSOCIATION

## LEVY FUND

### Note to Financial Statements

#### Commitments

(Unaudited - See Notice to Reader)

June 30, 2011

	Total to 2010	Forecast 2011		Total 2011	2012	After 2012
		Actual Q2 YTD	Forecast Q3-Q4			
(a) University Sponsorships for Dalhousie University, University of Alberta, University of British Columbia, University of Calgary, University of Manitoba, McMaster University, University of New Brunswick and University of Saskatchewan, with seven sponsorships of \$50,000 each per year for five years for a total of \$2,000,000.	\$ 502,000	\$ 106,000	\$ 392,000	\$ 498,000	\$ 400,000	\$ 400,000 in 2013 + \$150,000 in 2014 + \$50,000 in 2015
(b) Consulting fees.	250,250 for 2010	143,300	156,700	300,000	300,000	300,000 + each year after
(c) Design software-						
(i) Development of the software in partnership with the Canada Masonry Design Centre.	361,734	-	-	-	-	-
(ii) Funding to National Masonry Design Programs of 50% share of operating costs comprising support for technical assistance and software upgrades.	-	100,750	-	100,750	100,000	100,000 + each year after
(d) Ontario Masonry Training Centre (OMTC) for \$100,000 in 2011 and each year thereafter in addition to \$775,000 funded over four years to 2010.	775,000	50,000	50,000	100,000	100,000	100,000 + each year after
(e) Marketing of Basement CMU.	-	-	100,000	100,000	100,000	100,000 + each year after
(f) Membership dues to MasonryWorx Association, a marketing group sponsored in part by the Masonry Contractors of Metropolitan Toronto.	50,000 for 2010	50,000	25,000	75,000	75,000	75,000 + each year after
Subtotals continued on next page	\$ 1,938,984	\$ 450,050	\$ 723,700	\$ 1,173,750	\$ 1,075,000	\$ 1,075,000



# CANADIAN CONCRETE MASONRY PRODUCERS ASSOCIATION

## LEVY FUND

### Note to Financial Statements (continued)

#### Commitments

(Unaudited - See Notice to Reader)

June 30, 2011

	Total to 2010	Forecast 2011		Total 2011	2012	After 2012
		Actual Q2 YTD	Forecast Q3-Q4			
Subtotals carried forward	\$ 1,938,984	\$ 450,050	\$ 723,700	\$ 1,173,750	\$ 1,075,000	\$ 1,075,000
(g) Prolevy fee of 10% payable to the NCMA calculated on the levy fees that would be collected by the Association based on a 1.5 cent per unit levy.	64,009 for 2010	27,461	37,539	65,000	65,000 (i)	65,000 (i)
(h) Materials for Apprenticeship Training and Research for \$50,000 in 2011 and each year thereafter, with \$155,661 funded from 2008 to 2010.	155,661	27,714	22,286	50,000	50,000	50,000 + each year after
(i) Creation of the new Royal Architectural Institute of Canada (RAIC) Centre for Architecture at Athabasca University.	50,000	50,000	-	50,000	50,000	50,000 in both 2013 and 2014
(j) Educational tools.	82,352	-	23,000	23,000	-	-
(k) Wall Draining Project (NRC).	3,147	2,988	17,012	20,000	40,000	-
(l) CSA standard at \$15,000 per year for five years from 2009 to 2013.	30,000	15,000	-	15,000	15,000	15,000
(m) Unit Strength Method Corelation Study.	15,044	-	15,000	15,000	15,000	-
(n) National Sciences and Engineering Research Council (NSERC) funding.	15,000	-	15,000	15,000	15,000	-
(o) National Research Council (NRC) research.	71,423	13,590	-	13,590	-	-
(p) Masonry Alliance for Codes and Standards membership	12,945 for 2010	12,029	-	12,029	12,000	12,000 + each year after
(q) Masonry Training Scholarships.	10,000 for 2010	-	10,000	10,000	10,000	10,000 per year
Subtotals continued on next page	\$ 2,448,565	\$ 598,832	\$ 863,537	\$ 1,462,369	\$ 1,347,000	\$ 1,277,000

# CANADIAN CONCRETE MASONRY PRODUCERS ASSOCIATION

## LEVY FUND

### Note to Financial Statements (continued)

#### Commitments

(Unaudited - See Notice to Reader)

June 30, 2011

	Total to 2010	Forecast 2011		Total 2011	2012	After 2012
		Actual Q2 YTD	Forecast Q3-Q4			
Subtotals carried forward	\$ 2,448,565	\$ 598,832	\$ 863,537	\$ 1,462,369	\$ 1,347,000	\$ 1,277,000
(r) Cement study.	30,000	-	10,000	10,000	-	-
(s) Foundation Project - McMaster University.	87,232	-	10,000	10,000	-	-
(t) Block machine for McMaster University.	197,735	-	-	-	-	-
(u) Canadian Masonry Contractors Association (CMCA) fundraiser for Canadian Standards Association (CSA) standards.	93,185	-	-	-	-	-
(v) Masonry Design Awards, payable to Ontario Masonry Contractors.	71,000	-	-	-	-	-
(w) Canadian Masonry Symposium Sponsorship.	50,000	-	-	-	-	-
(x) Secondary engineering support.	38,872	-	-	-	-	-
(y) Funding to Dr. Svetlana Brzev and Dr. Don Anderson for a Seismic Design Guide.	30,717	-	-	-	-	-
(z) Masonry Apprenticeship Training Textbook.	25,000	-	-	-	-	-
<b>Totals</b>	<b>\$ 3,072,306</b>	<b>\$ 598,832</b>	<b>\$ 883,537</b>	<b>\$ 1,482,369</b>	<b>\$ 1,347,000</b>	<b>\$ 1,277,000</b>

(ii)

(i) Payment amount based on unit block sales.

(ii) Excluding items (a) and (i), each of which have a specified commitment end year, the commitment payments total to \$815,000 per year.

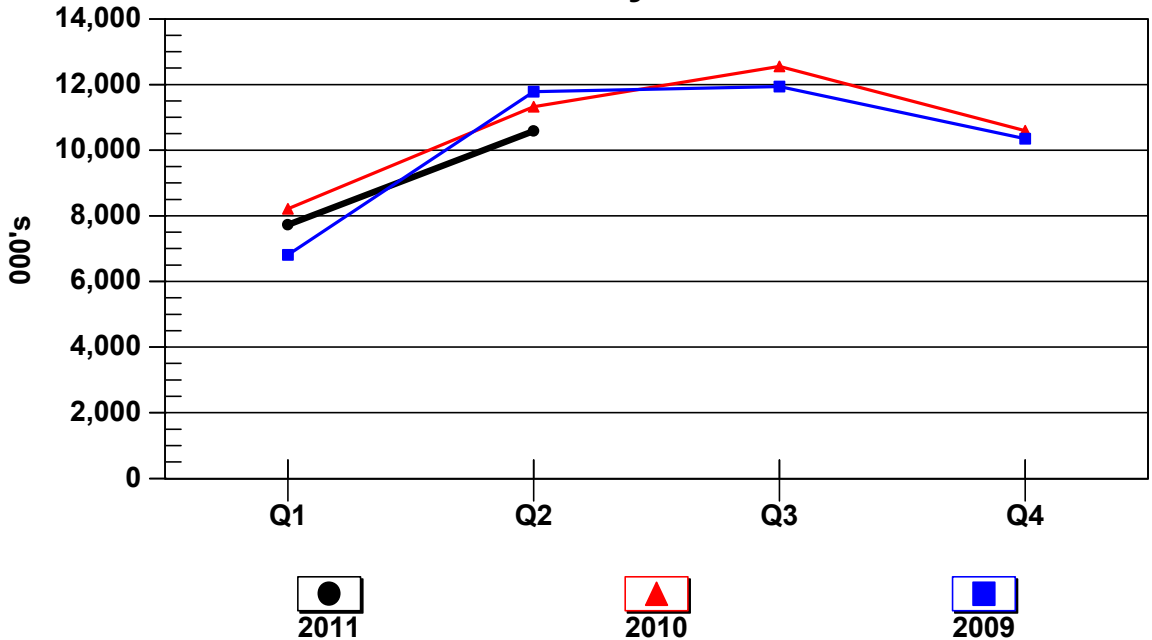
**CANADIAN CONCRETE MASONRY PRODUCERS ASSOCIATION****LEVY FUND****Block Sales Report****(Unaudited - See Notice to Reader)****For the three and six months ended June 30, 2011**

	<b>Q1</b>	<b>Q2</b>
<b>BLOCK SALES</b>		
<b>Quarter totals</b>		
Standard	5,049,541	7,067,135
Lightweight	2,256,753	2,928,289
Architectural	423,539	582,328
<b>Total</b>	<b>7,729,833</b>	<b>10,577,752</b>
<b>Year-to-date totals</b>		
Standard	5,049,541	12,116,676
Lightweight	2,256,753	5,185,042
Architectural	423,539	1,005,867
<b>Total</b>	<b>7,729,833</b>	<b>18,307,585</b>
<b>LEVY FEES</b>		
	(1)	
<b>Quarter totals</b>		
Gross amount	\$ 383,417	\$ 522,609
Less: Administration	(38,649)	(52,889)
<b>Net Levy fees</b>	<b>\$ 344,768</b>	<b>\$ 469,720</b>
<b>Year-to-date totals</b>		
Gross amount	\$ 383,417	\$ 906,026
Less: Administration	(38,649)	(91,538)
<b>Net Levy fees</b>	<b>\$ 344,768</b>	<b>\$ 814,488</b>

(1) Levy fees are based on a flat per block rate of 5.0¢ less 0.5¢ for administration. Final total levy amounts include certain levy balances at the pre-2008 net rate of 1.5¢ (2.0¢ less 0.5¢) reflecting charges to respective member customers at the former 2.0¢ per block rate.

**CANADIAN CONCRETE MASONRY PRODUCERS ASSOCIATION  
 LEVY FUND  
 Block Sales Report (continued)  
 (Unaudited - See Notice to Reader)  
 For the three and six months ended June 30, 2011**

**Block Sales by Quarter**



(000's)	Q1	Q2	Q3	Q4
<b>Quarter totals</b>				
2011	7,730	10,578	N/A	N/A
2010	8,214	11,319	12,548	10,592
2009	6,810	11,783	11,938	10,353
<b>Year-to-date totals</b>				
2011	7,730	18,308	N/A	N/A
2010	8,214	19,533	32,081	42,673
2009	6,810	18,593	30,531	40,884