

**CANADIAN CONCRETE MASONRY  
PRODUCERS ASSOCIATION**

**LEVY FUND**

**Financial Statements  
(Unaudited - See Notice to Reader)**

**Second Quarter ended June 30, 2009**



# CANADIAN CONCRETE MASONRY PRODUCERS ASSOCIATION

## Contents

June 30, 2009

<b>Notice to Reader .....</b>	<b>1</b>
<b>Financial Statements</b>	
Statement of Financial Position .....	2
Statement of Changes in Net Assets .....	3
Statement of Revenue and Expenses .....	4
Expenses .....	5
Note to Financial Statements .....	6 - 7
<b>Block Sales Report.....</b>	<b>8 - 9</b>



**DIXON, GORDON & CO. LLP**  
CHARTERED ACCOUNTANTS

August 18, 2009

## **NOTICE TO READER**

On the basis of information provided by management, we have compiled the statement of financial position of the Levy Fund of Canadian Concrete Masonry Producers Association as at June 30, 2009 and the statements of revenue and expenses and changes in net assets for the six months then ended.

We have not performed an audit or a review engagement in respect of these financial statements and accordingly, we express no assurance thereon.

Readers are cautioned that these statements may not be appropriate for their purposes.

Respectfully submitted,

*Dixon, Gordon + Co. LLP*

CHARTERED ACCOUNTANTS  
Licensed Public Accountants  
Toronto, Ontario

**CANADIAN CONCRETE MASONRY PRODUCERS ASSOCIATION  
LEVY FUND  
Statement of Financial Position  
(Unaudited - See Notice to Reader)  
June 30, 2009**

	June 30 2009	December 31 2008	June 30 2008
<b>Assets</b>			
Cash (a)	\$ 513,549	\$ 533,541	\$ 953,008
Investment - Guaranteed investment certificate	1,017,517	1,003,385	-
Accrued levy fees	493,460	437,979	484,285
	<b>\$ 2,024,526</b>	<b>\$ 1,974,905</b>	<b>\$ 1,437,293</b>
<b>Liabilities</b>			
Accounts payable	\$ 96,823	\$ 84,346	\$ 133,609
Accrued liabilities	23,396	20,947	18,403
Goods and services tax payable	9,666	20,860	5,321
	<b>129,885</b>	<b>126,153</b>	<b>157,333</b>
<b>Commitments (page 6)</b>			
<b>Net assets</b>			
Net assets internally restricted (page 3)	1,894,641	1,848,752	1,279,960
	<b>\$ 2,024,526</b>	<b>\$ 1,974,905</b>	<b>\$ 1,437,293</b>

(a) Cash balance in bank account as at June 30, 2009 was \$475,990.

See accompanying note

**CANADIAN CONCRETE MASONRY PRODUCERS ASSOCIATION  
LEVY FUND**

**Statement of Changes in Net Assets**

**(Unaudited - See Notice to Reader)**

**For the six months ended June 30, 2009**

	<b>Second Quarter</b>		<b>Year-to-date</b>	
	<b>2009</b>	<b>2008</b>	<b>2009</b>	<b>2008</b>
<b>Net assets, beginning of period</b>	<b>\$ 1,785,393</b>	\$ 1,096,368	<b>\$ 1,848,752</b>	\$ 1,303,903
Add: Excess (deficiency) of revenue over expenses (page 4)	<b>109,248</b>	183,592	<b>45,889</b>	(23,943)
<b>Net assets, end of period</b>	<b>\$ 1,894,641</b>	\$ 1,279,960	<b>\$ 1,894,641</b>	\$ 1,279,960

See accompanying note

**CANADIAN CONCRETE MASONRY PRODUCERS ASSOCIATION  
LEVY FUND**

**Statement of Revenue and Expenses**

(Unaudited - See Notice to Reader)

For the six months ended June 30, 2009

	Second Quarter		Year-to-date	
	2009	2008	2009	2008
<b>Revenue</b>				
Levy fees	\$ 525,126	\$ 484,284	\$ 828,835	\$ 789,064
Interest income	7,425	1,237	14,579	4,229
	<b>532,551</b>	485,521	<b>843,414</b>	793,293
<b>Expenses (page 5)</b>				
Technical programs	373,799	186,060	654,675	613,942
Advertising and promotion	31,605	98,072	110,717	174,163
General and administrative	17,899	17,797	32,133	29,131
	<b>423,303</b>	301,929	<b>797,525</b>	817,236
<b>Excess (deficiency) of revenue over expenses</b>	<b>\$ 109,248</b>	\$ 183,592	<b>\$ 45,889</b>	\$ (23,943)

See accompanying note

**CANADIAN CONCRETE MASONRY PRODUCERS ASSOCIATION  
LEVY FUND**

**Expenses**

**(Unaudited - See Notice to Reader)**

**For the six months ended June 30, 2009**

	Second Quarter		Year-to-date	
	2009	2008	2009	2008
<b>Technical programs</b>				
University sponsorships	\$ 100,000	\$ -	\$ 200,000	\$ -
Block machine donation - McMaster University	-	-	-	199,093
National training fund contribution	62,500	56,250	125,000	112,500
National Concrete Masonry Association (NCMA) consulting	41,543	49,020	84,382	73,165
Canadian Masonry Symposium Sponsorship	50,000	-	50,000	-
Secondary engineering support and equipment	18,591	21,761	38,872	42,554
Training Centre block delivery	9,281	10,220	37,018	16,924
Canadian Masonry Contractors Association conference sponsorship	25,000	-	25,000	25,000
Software design development	21,000	-	21,725	-
Foundation Project	16,800	16,800	17,943	16,800
National Research Council (NRC) research	2,253	-	15,823	50,000
Canadian Standards Association (CSA) A165 Standard development	15,000	-	15,000	-
NCMA expenses	8,997	6,063	12,377	8,056
Educational tools	-	-	8,701	-
Seismic Design Guide	3,717	10,000	3,717	10,000
Materials for Training Centre	(883)	15,946	(883)	59,850
	<b>\$ 373,799</b>	<b>\$ 186,060</b>	<b>\$ 654,675</b>	<b>\$ 613,942</b>
<b>Advertising and promotion</b>				
Billboard promotion	\$ -	\$ 78,451	\$ -	\$ 78,451
MasonryWorx fees	-	-	50,000	50,000
NCMA fees	17,675	14,621	27,890	23,841
Masonry Alliance for Codes and Standards membership dues	-	-	18,897	12,725
General advertising	13,930	-	13,930	2,146
University sponsorships	-	5,000	-	7,000
	<b>\$ 31,605</b>	<b>\$ 98,072</b>	<b>\$ 110,717</b>	<b>\$ 174,163</b>
<b>General and administrative</b>				
Travel and meetings	\$ 3,113	\$ 16,137	\$ 12,823	\$ 22,946
Accounting and legal	13,786	1,450	18,211	5,790
Bank charges	74	25	149	40
Postage and courier	926	185	950	355
	<b>\$ 17,899</b>	<b>\$ 17,797</b>	<b>\$ 32,133</b>	<b>\$ 29,131</b>

See accompanying note

# CANADIAN CONCRETE MASONRY PRODUCERS ASSOCIATION

## LEVY FUND

### Note to Financial Statements

#### Commitments

(Unaudited - See Notice to Reader)

June 30, 2009

	Total to 2008	Forecast 2009		Total 2009	After 2009
		Q2 YTD 2009	Q3 to Q4		
(a) Development of design software in partnership with the Ontario Masonry Contractors Association. The commitment may be as high as \$200,000.	\$ -	\$ 21,725	\$ 178,275	\$ 200,000 Maximum	\$ -
(b) Prolevy fee of 10% payable to the NCMA calculated on the levy fees that would be collected by the Association based on a 1.5 cent per unit levy.	54,520	27,890	(i)	27,890 + Q3 to Q4 (i)	(i)
(c) Consulting fees and expenses paid to the NCMA.	149,407	84,382	65,618	150,000	-
(d) NRC – Institute for Research in Construction, for "The Characterization of Fires in Multi-Suite Residential Dwellings" project.	100,000	15,823	-	15,823	-
(e) Membership dues to MasonryWorx Association, a marketing group sponsored in part by the Masonry Contractors of Metropolitan Toronto.	50,000	50,000	-	50,000	-
(f) To pay the Ontario Masonry Training Centre (OMTC) a total of \$675,000 over three years.	425,000	125,000	125,000	250,000	-
(g) Provide funding to Dr. Svetlana Brzev and Dr. Don Anderson for a Seismic Design Guide.	27,000	3,717	1,283	5,000	-
(h) To pay approximately \$100,000 per year for secondary engineering support and equipment.	78,686	38,872	61,128	100,000	-
(i) Masonry Apprenticeship Training Textbook.	25,000	-	-	-	-
(j) Materials for Apprenticeship Training and Research.	29,057	37,018	12,982	50,000	50,000
(k) Materials for construction of the new OMTC/Conestoga Training Centre.	59,850	(883)	883	-	-
(l) University Sponsorships for seven universities for a total of \$1,550,000 at \$300,000 per year from 2009 to 2013 plus \$50,000 prior to 2009.	50,000	200,000	100,000	300,000	1,200,000
(m) CMCA fund raiser for CSA standards.	25,000	25,000	-	25,000	75,000
Subtotals continued on next page	\$ 1,073,520	\$ 628,544	\$ 545,169	\$ 1,173,713	\$ 1,325,000



**CANADIAN CONCRETE MASONRY PRODUCERS ASSOCIATION**  
**LEVY FUND**  
**Note to Financial Statements (continued)**  
**Commitments**  
**(Unaudited - See Notice to Reader)**  
**June 30, 2009**

<b>Commitments (continued)</b>	<b>Total to 2008</b>	<b>Forecast 2009</b>		<b>Total 2009</b>	<b>After 2009</b>
		<b>Q2 YTD 2009</b>	<b>Q3 to Q4</b>		
Subtotals carried forward	\$ 1,073,520	\$ 628,544	\$ 545,169	\$ 1,173,713	\$ 1,325,000
(n) Canadian Standards Association (CSA) standard.	-	15,000	-	15,000	60,000
(o) Block machine for McMaster University.	197,735	-	-	-	-
(p) Foundation Project - McMaster University.	18,904	17,943	-	17,943	-
(q) Educational tools.	12,854	8,701	25,299	34,000	30,000
(r) Masonry Design Awards Scholarship.	11,000	-	-	(ii)	(ii)
(s) Canadian Masonry Symposium Sponsorship.	-	50,000	-	50,000	-
(t) Cement study.	-	-	20,000	20,000	10,000
<b>Commitment totals, before the effects of items (b) and (r)</b>	<b>\$ 1,314,013</b>	<b>\$ 720,188</b>	<b>\$ 590,468</b>	<b>\$ 1,310,656</b>	<b>\$ 1,425,000</b>

- (i) Payment amount based on unit block sales.  
(ii) Commitment amounts for 2009-10 to be announced.

**CANADIAN CONCRETE MASONRY PRODUCERS ASSOCIATION  
LEVY FUND  
Block Sales Report  
(Unaudited - See Notice to Reader)  
For the six months ended June 30, 2009**

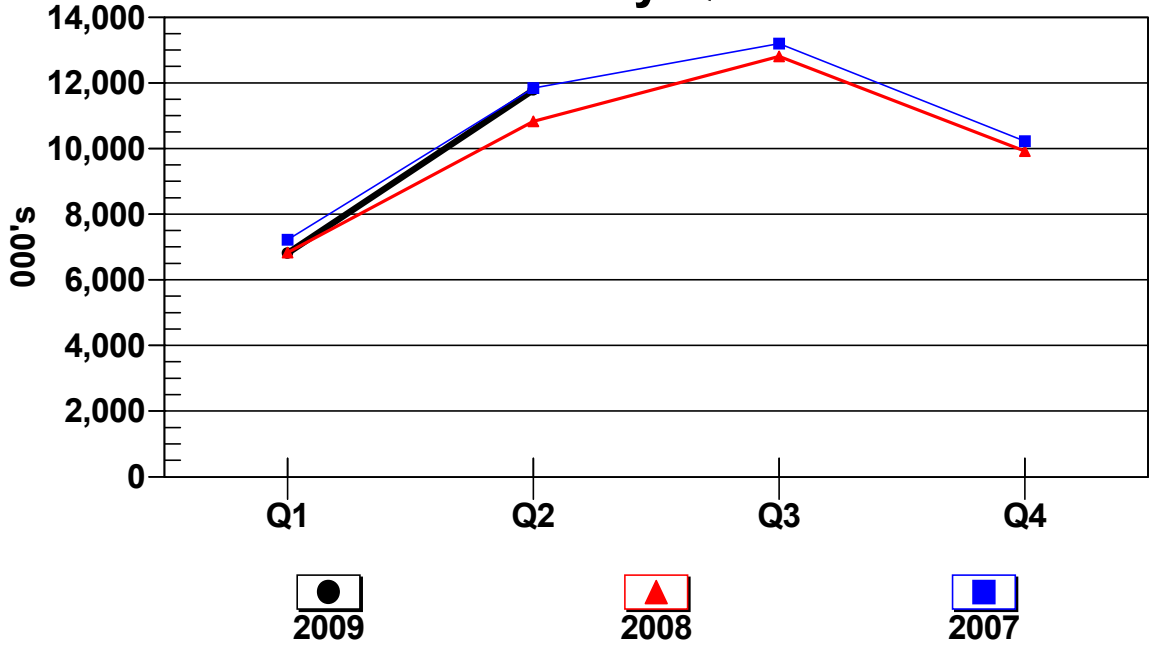
	Q1	Q2
<b>BLOCK SALES</b>		
<b>Quarter totals</b>	(1)	
Standard	4,353,639	7,964,447
Lightweight	2,008,447	3,072,525
Architectural	447,835	746,111
<b>Total</b>	<b>6,809,921</b>	<b>11,783,083</b>
<b>Year-to-date totals</b>		
Standard	4,353,639	12,318,086
Lightweight	2,008,447	5,080,972
Architectural	447,835	1,193,946
<b>Total</b>	<b>6,809,921</b>	<b>18,593,004</b>
<b>LEVY FEES</b>		
<b>Quarter totals</b>	(2)	
Gross amount	\$ 337,759	\$ 584,041
Less: Administration	(34,050)	(58,915)
<b>Net Levy fees</b>	<b>\$ 303,709</b>	<b>\$ 525,126</b>
<b>Year-to-date totals</b>		
Gross amount	\$ 337,759	\$ 921,800
Less: Administration	(34,050)	(92,965)
<b>Net Levy fees</b>	<b>\$ 303,709</b>	<b>\$ 828,835</b>

(1) Block sales for 2008-Q2 reflect a reduction associated with adjustments to revenue previously recognized in 2007 related to a particular member.

(2) Levy fees are based on a flat per block rate of 5.0¢ less 0.5¢ for administration. Final total levy amounts include certain levy balances at the pre-2008 net rate of 1.5¢ (2.0¢ less 0.5¢) reflecting charges to respective member customers at the former 2.0¢ per block rate.

**CANADIAN CONCRETE MASONRY PRODUCERS ASSOCIATION  
 LEVY FUND  
 Block Sales Report (continued)  
 (Unaudited - See Notice to Reader)  
 For the six months ended June 30, 2009**

**Block Sales by Quarter**



(000's)	Q1	Q2	Q3	Q4
<b>Quarter totals</b>				
2009	6,810	11,783	N/A	N/A
2008	6,829	10,831	12,802	9,923
2007	7,218	11,840	13,200	10,226
<b>Year-to-date totals</b>				
2009	6,810	18,593	N/A	N/A
2008	6,829	17,660	30,462	40,385
2007	7,218	19,058	32,258	42,484