

**CANADIAN CONCRETE MASONRY
PRODUCERS ASSOCIATION**

LEVY FUND

**Financial Statements
(Unaudited - See Notice to Reader)**

Third Quarter ended September 30, 2009



CANADIAN CONCRETE MASONRY PRODUCERS ASSOCIATION

Contents

September 30, 2009

Notice to Reader	1
Financial Statements	
Statement of Financial Position	2
Statement of Changes in Net Assets	3
Statement of Revenue and Expenses	4
Expenses	5
Note to Financial Statements	6 - 7
Block Sales Report	8 - 9



DIXON, GORDON & CO. LLP
CHARTERED ACCOUNTANTS

November 20, 2009

NOTICE TO READER

On the basis of information provided by management, we have compiled the statement of financial position of the Levy Fund of Canadian Concrete Masonry Producers Association as at September 30, 2009 and the statements of revenue and expenses and changes in net assets for the nine months then ended.

We have not performed an audit or a review engagement in respect of these financial statements and accordingly, we express no assurance thereon.

Readers are cautioned that these statements may not be appropriate for their purposes.

Respectfully submitted,

Dixon, Gordon + Co. LLP

CHARTERED ACCOUNTANTS
Licensed Public Accountants
Toronto, Ontario

**CANADIAN CONCRETE MASONRY PRODUCERS ASSOCIATION
LEVY FUND**

**Statement of Financial Position
(Unaudited - See Notice to Reader)
September 30, 2009**

	September 30 2009	December 31 2008	September 30 2008
Assets			
Cash (a)	\$ 723,876	\$ 533,541	\$ 1,091,560
Investment - Guaranteed investment certificate	1,024,701	1,003,385	-
Accrued levy fees	526,562	437,979	564,524
Prepaid expenses	-	-	742
	\$ 2,275,139	\$ 1,974,905	\$ 1,656,826
Liabilities			
Accounts payable	\$ 36,248	\$ 84,346	\$ 37,881
Accrued liabilities	24,911	20,947	68
Goods and services tax payable	19,836	20,860	14,932
	80,995	126,153	52,881
Commitments (page 6)			
Net assets			
Net assets internally restricted (page 3)	2,194,144	1,848,752	1,603,945
	\$ 2,275,139	\$ 1,974,905	\$ 1,656,826

(a) Cash balance in bank account as at September 30, 2009 was \$691,541.

See accompanying note

**CANADIAN CONCRETE MASONRY PRODUCERS ASSOCIATION
LEVY FUND**

**Statement of Changes in Net Assets
(Unaudited - See Notice to Reader)**

For the nine months ended September 30, 2009

	Third Quarter		Year-to-date	
	2009	2008	2009	2008
Net assets, beginning of period	\$ 1,894,641	\$ 1,279,960	\$ 1,848,752	\$ 1,303,903
Excess of revenue over expenses (page 4)	299,503	323,985	345,392	300,042
Net assets, end of period	\$ 2,194,144	\$ 1,603,945	\$ 2,194,144	\$ 1,603,945

See accompanying note

**CANADIAN CONCRETE MASONRY PRODUCERS ASSOCIATION
LEVY FUND**

**Statement of Revenue and Expenses
(Unaudited - See Notice to Reader)**

For the nine months ended September 30, 2009

	Third Quarter		Year-to-date	
	2009	2008	2009	2008
Revenue				
Levy fees	\$ 526,562	\$ 564,525	\$ 1,355,397	\$ 1,353,589
Interest income	7,434	-	22,013	4,229
	533,996	564,525	1,377,410	1,357,818
Expenses (page 5)				
Technical programs	193,170	124,853	847,845	738,795
Advertising and promotion	34,818	111,712	145,535	285,875
General and administrative	6,505	3,975	38,638	33,106
	234,493	240,540	1,032,018	1,057,776
Excess of revenue over expenses	\$ 299,503	\$ 323,985	\$ 345,392	\$ 300,042

See accompanying note

**CANADIAN CONCRETE MASONRY PRODUCERS ASSOCIATION
LEVY FUND**

Expenses

(Unaudited - See Notice to Reader)

For the nine months ended September 30, 2009

	Third Quarter		Year-to-date	
	2009	2008	2009	2008
Technical programs				
University sponsorships	\$ 50,000	\$ -	\$ 250,000	\$ -
Block machine donation - McMaster University	-	-	-	199,093
National training fund contribution	62,500	56,250	187,500	168,750
National Concrete Masonry Association (NCMA) consulting	41,783	39,410	126,165	112,575
Canadian Masonry Symposium Sponsorship	-	-	50,000	-
Software design development	23,310	1,818	45,035	1,818
Secondary engineering support and equipment	-	17,157	38,872	59,711
Training Centre block delivery	1,523	(4,409)	38,541	12,515
Canadian Masonry Contractors Association conference sponsorship	-	-	25,000	25,000
Foundation Project	891	1,404	18,834	18,204
National Research Council (NRC) research	-	-	15,823	50,000
NCMA expenses	3,163	4,049	15,540	12,105
Canadian Standards Association (CSA) A165 Standard development	-	-	15,000	-
Cement study	10,000	-	10,000	-
Educational tools	-	2,174	8,701	2,174
Seismic Design Guide	-	7,000	3,717	17,000
Materials for Training Centre	-	-	(883)	59,850
	\$ 193,170	\$ 124,853	\$ 847,845	\$ 738,795
Advertising and promotion				
Billboard promotion	\$ -	\$ 80,189	\$ -	\$ 158,640
MasonryWorx fees	-	-	50,000	50,000
NCMA fees	17,907	17,283	45,797	41,124
General advertising	8,644	2,190	22,574	4,336
Masonry Alliance for Codes and Standards membership dues	-	-	18,897	12,725
National Masonry Benchmarking Study	-	10,383	-	10,383
North American Masonry Conference sponsorship	8,267	-	8,267	-
University sponsorships	-	-	-	7,000
Fire-safe construction brochures	-	1,667	-	1,667
	\$ 34,818	\$ 111,712	\$ 145,535	\$ 285,875
General and administrative				
Travel and meetings	\$ 1,535	\$ 270	\$ 14,358	\$ 23,216
Accounting and legal	4,795	3,550	23,006	9,340
Bank charges	76	13	225	53
Postage and courier	99	142	1,049	497
	\$ 6,505	\$ 3,975	\$ 38,638	\$ 33,106

See accompanying note

CANADIAN CONCRETE MASONRY PRODUCERS ASSOCIATION

LEVY FUND

Note to Financial Statements

Commitments

(Unaudited - See Notice to Reader)

September 30, 2009

	Total to 2008	Forecast 2009			2010	After 2010
		Q3 YTD 2009	Q4	Total 2009		
(a) Development of design software in partnership with the Ontario Masonry Contractors Association.	\$ -	\$ 45,035	\$ -	\$ 45,035	\$ 200,000	\$ -
(b) Prolevy fee of 10% payable to the NCMA calculated on the levy fees that would be collected by the Association based on a 1.5 cent per unit levy.	54,520	45,797	19,203	65,000	65,000	65,000
(c) Consulting fees and expenses paid to the NCMA.	149,407	126,165	-	126,165	-	-
(d) Third-party engineering.	100,000	15,823	-	15,823	100,000	-
(e) Membership dues to MasonryWorx Association, a marketing group sponsored in part by the Masonry Contractors of Metropolitan Toronto.	50,000	50,000	-	50,000	50,000	-
(f) Ontario Masonry Training Centre (OMTC) for \$675,000 over three years to 2009 and \$100,000 in 2010 and each year thereafter.	425,000	187,500	62,500	250,000	100,000	100,000 + each year after
(g) Funding to Dr. Svetlana Brzev and Dr. Don Anderson for a Seismic Design Guide.	27,000	3,717	1,283	5,000	10,000	-
(h) Secondary engineering support and equipment.	78,686	38,872	-	38,872	-	-
(i) Masonry Apprenticeship Training Textbook.	25,000	-	-	-	-	-
(j) Materials for Apprenticeship Training and Research for \$50,000 in 2009 and each year thereafter.	29,057	38,541	11,459	50,000	50,000	50,000 + each year after
(k) University Sponsorships for Dalhousie University, University of Alberta, University of British Columbia, University of Calgary, University of Manitoba, University of New Brunswick and University of Saskatchewan at \$50,000 each per year for five years for a total of \$1,750,000.	-	250,000	-	250,000	350,000 (iii)	350,000 + each year to 2013 + \$100,000 in 2014 (iii)
Subtotals continued on next page	\$ 938,670	\$ 801,450	\$ 94,445	\$ 895,895	\$ 925,000	\$ 565,000

CANADIAN CONCRETE MASONRY PRODUCERS ASSOCIATION

LEVY FUND

Note to Financial Statements (continued)

Commitments

(Unaudited - See Notice to Reader)

September 30, 2009

Commitments (continued)	Total to 2008	Forecast 2009			2010	After 2010
		Q3 YTD 2009	Q4	Total 2009		
Subtotals carried forward	\$ 938,670	\$ 801,450	\$ 94,445	\$ 895,895	\$ 925,000	\$ 565,000
(l) CMCA fund raiser for CSA standards.	25,000	25,000	-	25,000	-	-
(m) Canadian Standards Association (CSA) standard at \$15,000 per year for five years from 2009 to 2013.	-	15,000	-	15,000	15,000	15,000
(n) Block machine for McMaster University.	197,735	-	-	-	-	-
(o) Foundation Project - McMaster University.	18,904	18,834	10,000	28,834	-	-
(p) Educational tools.	12,854	8,701	-	8,701	35,000	-
(q) Masonry Design Awards Scholarship.	11,000	-	-	(ii)	(ii)	(ii)
(r) Canadian Masonry Symposium Sponsorship.	-	50,000	-	50,000	-	-
(s) Cement study.	-	10,000	-	10,000	20,000	-
(t) Creation of the new Royal Architectural Institute of Canada (RAIC) Centre for Architecture at Athabasca University.	-	-	-	-	50,000	50,000 + each year to 2014
Commitment totals to 2011 before the effect of item (q)	\$ 1,204,163	\$ 928,985	\$ 104,445	\$ 1,033,430	\$ 1,045,000	\$ 630,000

(i) Payment amount based on unit block sales.

(ii) Commitment amounts for 2009-10 to be announced.

(iii) Final contract discussions are in progress in respect of the university sponsorships with the University of New Brunswick and the University of British Columbia.

**CANADIAN CONCRETE MASONRY PRODUCERS ASSOCIATION
LEVY FUND
Block Sales Report
(Unaudited - See Notice to Reader)
For the nine months ended September 30, 2009**

		Q1	Q2	Q3
BLOCK SALES				
Quarter totals	(1)			
Standard		4,353,639	7,964,447	7,890,727
Lightweight		2,008,447	3,072,525	3,022,900
Architectural		447,835	746,111	1,024,796
Total		6,809,921	11,783,083	11,938,423

Year-to-date totals				
Standard		4,353,639	12,318,086	20,208,813
Lightweight		2,008,447	5,080,972	8,103,872
Architectural		447,835	1,193,946	2,218,742
Total		6,809,921	18,593,004	30,531,427

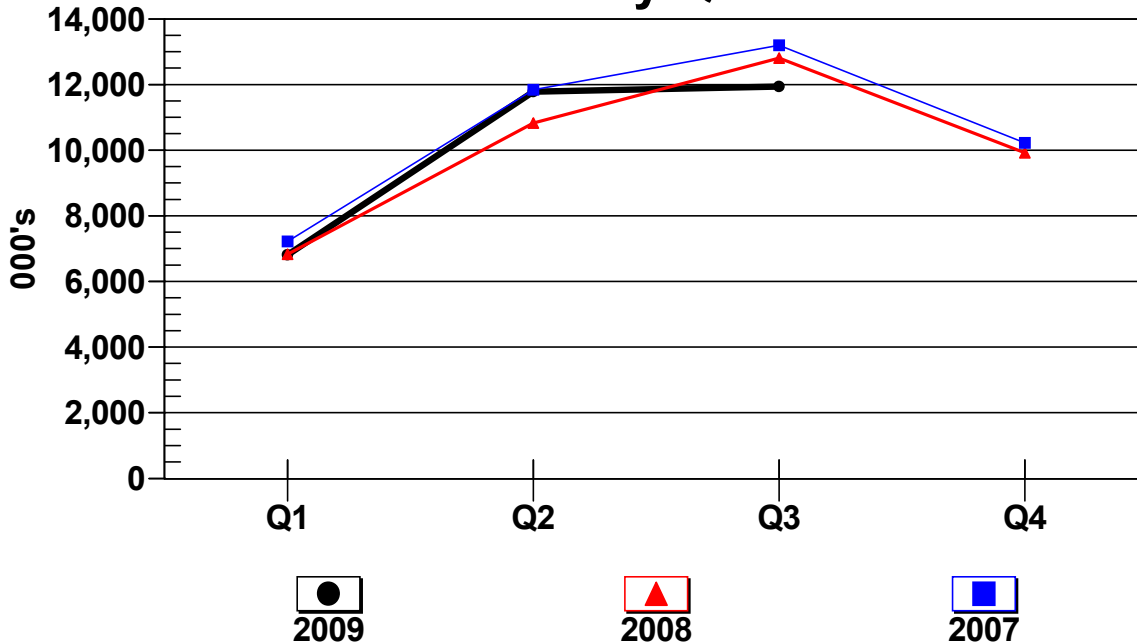
LEVY FEES				
Quarter totals	(2)			
Gross amount		\$ 337,759	\$ 584,041	\$ 586,254
Less: Administration		(34,050)	(58,915)	(59,692)
Net Levy fees		\$ 303,709	\$ 525,126	\$ 526,562

Year-to-date totals				
Gross amount		\$ 337,759	\$ 921,800	\$ 1,508,054
Less: Administration		(34,050)	(92,965)	(152,657)
Net Levy fees		\$ 303,709	\$ 828,835	\$ 1,355,397

- (1) Block sales for 2008-Q2 reflect a reduction associated with adjustments to revenue previously recognized in 2007 related to a particular member.
- (2) Levy fees are based on a flat per block rate of 5.0¢ less 0.5¢ for administration. Final total levy amounts include certain levy balances at the pre-2008 net rate of 1.5¢ (2.0¢ less 0.5¢) reflecting charges to respective member customers at the former 2.0¢ per block rate.

**CANADIAN CONCRETE MASONRY PRODUCERS ASSOCIATION
 LEVY FUND
 Block Sales Report (continued)
 (Unaudited - See Notice to Reader)
 For the nine months ended September 30, 2009**

Block Sales by Quarter



(000's)	Q1	Q2	Q3
Quarter totals			
2009	6,810	11,783	11,938
2008	6,829	10,831	12,802
2007	7,218	11,840	13,200
Year-to-date totals			
2009	6,810	18,593	30,531
2008	6,829	17,660	30,462
2007	7,218	19,058	32,258