

**CANADIAN CONCRETE MASONRY  
PRODUCERS ASSOCIATION**

**LEVY FUND**

**Financial Statements  
(Unaudited - See Notice to Reader)**

**Fourth Quarter and Year ended December 31, 2010**



**CANADIAN CONCRETE MASONRY PRODUCERS ASSOCIATION  
LEVY FUND  
Contents  
(Unaudited - See Notice to Reader)  
December 31, 2010**

<b>Notice to Reader</b> .....	1
<b>Financial Statements</b>	
Statement of Financial Position .....	2
Statement of Changes in Net Assets .....	3
Statement of Revenue and Expenses .....	4
Expenses .....	5 - 6
Note to Financial Statements .....	7 - 9
<b>Block Sales Report</b> .....	10 - 11



**DIXON, GORDON & CO. LLP**  
CHARTERED ACCOUNTANTS

May 18, 2011

## **NOTICE TO READER**

On the basis of information provided by management, we have compiled the statement of financial position of the Levy Fund of Canadian Concrete Masonry Producers Association as at December 31, 2010 and the statements of revenue and expenses and changes in net assets for the three months and year then ended.

We have not performed an audit or a review engagement in respect of these financial statements and accordingly, we express no assurance thereon.

Readers are cautioned that these statements may not be appropriate for their purposes.

Respectfully submitted,

# **DRAFT**

CHARTERED ACCOUNTANTS  
Licensed Public Accountants  
Toronto, Canada

**CANADIAN CONCRETE MASONRY PRODUCERS ASSOCIATION  
LEVY FUND  
Statement of Financial Position  
(Unaudited - See Notice to Reader)  
December 31, 2010**

	<b>December 31 2010</b>	<b>December 31 2009</b>
<b>Assets</b>		
Cash (a)	\$ 397,808	\$ 1,015,003
Investment - Guaranteed investment certificates	2,040,059	1,029,333
Accrued levy fees	466,926	457,213
Prepaid expense	2,066	691
	<b>\$ 2,906,859</b>	<b>\$ 2,502,240</b>
<b>Liabilities</b>		
Accounts payable	\$ 39,152	\$ 63,198
Accrued liabilities	70,535	44,201
Sales tax payable	26,203	17,408
	<b>135,890</b>	<b>124,807</b>
<b>Commitments (pages 7-9)</b>		
<b>Net assets</b>		
Net assets internally restricted (page 3)	2,770,969	2,377,433
	<b>\$ 2,906,859</b>	<b>\$ 2,502,240</b>

(a) Cash balance in bank account as at December 31, 2010 was \$386,412.

See accompanying note

**CANADIAN CONCRETE MASONRY PRODUCERS ASSOCIATION  
LEVY FUND**

**Statement of Changes in Net Assets  
(Unaudited - See Notice to Reader)**

**For the three months and year ended December 31, 2010**

	<u>Fourth Quarter</u>		<u>Total Year</u>	
	<u>2010</u>	<u>2009</u>	<u>2010</u>	<u>2009</u>
<b>Net assets, beginning of period</b>	<b>\$ 2,872,857</b>	\$ 2,194,144	<b>\$ 2,377,433</b>	\$ 1,848,752
Excess of revenue over expenses (expenses over revenue) (page 4)	<b>(101,888)</b>	183,289	<b>393,536</b>	528,681
<b>Net assets, end of period</b>	<b>\$ 2,770,969</b>	\$ 2,377,433	<b>\$ 2,770,969</b>	\$ 2,377,433

See accompanying note

**CANADIAN CONCRETE MASONRY PRODUCERS ASSOCIATION  
LEVY FUND**

**Statement of Revenue and Expenses  
(Unaudited - See Notice to Reader)**

**For the three months and year ended December 31, 2010**

	Fourth Quarter		Total Year	
	2010	2009	2010	2009
<b>Revenue</b>				
Levy fees	\$ 466,926	\$ 457,213	\$ 1,889,804	\$ 1,812,610
Interest	5,991	4,881	12,147	26,894
	<b>472,917</b>	462,094	<b>1,901,951</b>	1,839,504
<b>Expenses (page 5)</b>				
Technical programs	546,259	256,688	1,243,716	1,104,533
Advertising and promotion	18,533	15,284	236,989	160,819
General and administration	10,013	6,833	27,710	45,471
	<b>574,805</b>	278,805	<b>1,508,415</b>	1,310,823
<b>Excess of revenue over expenses (expenses over revenue)</b>	<b>\$ (101,888)</b>	\$ 183,289	<b>\$ 393,536</b>	\$ 528,681

See accompanying note

**CANADIAN CONCRETE MASONRY PRODUCERS ASSOCIATION  
LEVY FUND**

**Expenses**

**(Unaudited - See Notice to Reader)**

**For the three months and year ended December 31, 2010**

	Fourth Quarter		Total Year	
	2010	2009	2010	2009
<b>Technical programs</b>				
Software design development	\$ 268,568	\$ 23,538	\$ 293,161	\$ 68,573
University sponsorships	46,000	-	252,000	250,000
Consulting fees	74,125	41,145	250,250	167,310
National training fund contribution	25,000	62,500	100,000	250,000
Masonry Design Awards	50,000	-	60,000	-
Training Centre block delivery	11,397	31,859	57,087	69,517
Centre for Architecture - Athabasca University	-	-	50,000	-
Canadian Masonry Symposium Sponsorship	-	-	-	50,000
Canadian Masonry Contractors Association (CMCA) conference sponsorship	-	-	43,185	25,000
Secondary engineering support	-	-	-	38,872
Consulting expenses	9,841	7,059	31,388	22,599
Educational tools	12,699	38,566	22,231	47,267
Unit Strength Method Correlation Study	15,044	-	15,044	-
Canadian Standards Association (CSA) A165 Standard development	-	-	15,000	15,000
National Sciences and Engineering Research Council (NSERC) funding	15,000	-	15,000	-
Cement study	-	10,000	10,000	20,000
Masonry Training Scholarships	10,000	-	10,000	-
Foundation Project	2,288	42,021	7,473	60,855
National Research Council (NRC) research	-	-	5,600	15,823
Seismic Design Guide	-	-	-	3,717
National Energy Code of Canada Report	3,150	-	3,150	-
Wall Drainage Project (NRC)	3,147	-	3,147	-
	<b>\$ 546,259</b>	<b>\$ 256,688</b>	<b>\$ 1,243,716</b>	<b>\$ 1,104,533</b>
<b>Advertising and promotion</b>				
National Concrete Masonry Association fees	\$ 15,887	\$ 15,529	\$ 64,009	\$ 61,326
General advertising	471	(739)	50,189	21,835
MasonryWorx Association fees	-	-	50,000	50,000
MasonryWorx Association sponsorship	-	-	25,000	-
Commercial production	-	-	15,000	-
Masonry Alliance for Codes and Standards membership	-	-	12,945	18,897
North American Masonry Conference sponsorship	-	-	10,384	8,267
Website	2,175	-	8,325	-
Masonry Executives Council fees	-	494	1,137	494
	<b>\$ 18,533</b>	<b>\$ 15,284</b>	<b>\$ 236,989</b>	<b>\$ 160,819</b>

Continued on next page

See accompanying note

**CANADIAN CONCRETE MASONRY PRODUCERS ASSOCIATION  
LEVY FUND**

**Expenses (continued)**

**(Unaudited - See Notice to Reader)**

**For the three months and year ended December 31, 2010**

	<b>Fourth Quarter</b>		<b>Total Year</b>	
	<b>2010</b>	<b>2009</b>	<b>2010</b>	<b>2009</b>
<b>General and administration</b>				
Audit, accounting and legal	\$ 9,250	\$ 5,525	\$ 24,210	\$ 28,531
Travel and meetings	270	-	1,978	14,358
Postage and courier	443	46	1,446	1,095
Bank charges	50	20	76	245
Membership recruitment	-	1,242	-	1,242
	<b>\$ 10,013</b>	<b>\$ 6,833</b>	<b>\$ 27,710</b>	<b>\$ 45,471</b>

See accompanying note



# CANADIAN CONCRETE MASONRY PRODUCERS ASSOCIATION

## LEVY FUND

### Note to Financial Statements

#### Commitments

(Unaudited - See Notice to Reader)

December 31, 2010

	Total to 2009	2010	2011	After 2011
(a) Design software-				
(i) Development of the software in partnership with the Canada Masonry Design Centre.	\$ 68,573	\$ 293,161	\$ -	\$ -
(ii) Funding to National Masonry Design Programs of 50% share of operating costs comprising support for technical assistance and software upgrades.	-	-	100,000	100,000 + each year after
(b) University sponsorships for Dalhousie University, University of Alberta, University of British Columbia, University of Calgary, University of Manitoba, University of New Brunswick and University of Saskatchewan, with seven sponsorships of \$50,000 each per year for five years for a total of \$1,750,000.	250,000	252,000	448,000	350,000 + each year to 2013 + \$100,000 in 2014
(c) Consulting fees.	167,310 for year	250,250	300,000	300,000 + each year after
(d) Block machine for McMaster University.	197,735	-	-	-
(e) Ontario Masonry Training Centre (OMTC) for \$100,000 in 2011 and each year thereafter in addition to \$775,000 funded over four years to 2010.	675,000	100,000	100,000	100,000 + each year after
(f) Marketing of Basement CMU.	-	-	100,000	100,000 + each year after
(g) Prolevy fee of 10% payable to the NCMA calculated on the levy fees that would be collected by the Association based on a 1.5 cent per unit levy.	61,326 for year	64,009	65,000 (i)	65,000 (i)
(h) Masonry Design Awards, payable to Ontario Masonry Contractors.	11,000	60,000	-	-
(i) Materials for Apprenticeship Training and Research for \$50,000 in 2011 and each year thereafter, with \$155,661 funded in 2008 to 2010.	98,574	57,087	50,000	50,000 + each year after
Subtotals continued on next page	\$ 1,529,518	\$ 1,076,507	\$ 1,163,000	\$ 1,065,000

# CANADIAN CONCRETE MASONRY PRODUCERS ASSOCIATION

## LEVY FUND

### Note to Financial Statements (continued)

#### Commitments

(Unaudited - See Notice to Reader)

December 31, 2010

	Total to 2009	Total 2010	2011	After 2011
Subtotals carried forward	\$ 1,529,518	\$ 1,076,507	\$ 1,163,000	\$ 1,065,000
(j) Creation of the new Royal Architectural Institute of Canada (RAIC) Centre for Architecture at Athabasca University.	-	50,000	50,000	50,000 + each year to 2014
(k) Membership dues to MasonryWorx Association, a marketing group sponsored in part by the Masonry Contractors of Metropolitan Toronto.	50,000 for year	50,000	75,000	75,000 + each year after
(l) Canadian Masonry Contractors Association fundraiser for Canadian Standards Association standards.	50,000	43,185	-	-
(m) Educational tools.	60,121	22,231	23,000	-
(n) Unit Strength Method Corelation Study.	-	15,044	15,000	15,000
(o) CSA standard at \$15,000 per year for five years from 2009 to 2013.	15,000	15,000	15,000	15,000 + each year to 2013
(p) National Sciences and Engineering Research Council (NSERC) funding.	-	15,000	15,000	15,000
(q) Cement study.	20,000	10,000	10,000	-
(r) Masonry Training Scholarships.	-	10,000	10,000	10,000 per year
(s) Foundation Project - McMaster University.	79,759	7,473	10,000	-
(t) Funding to Dr. Svetlana Brzev and Dr. Don Anderson for a Seismic Design Guide.	30,717	-	-	-
(u) National Research Council (NRC) research.	65,823	5,600	-	-
(v) Wall Draining Project (NRC).	-	3,147	20,000	40,000
(w) Canadian Masonry Symposium Sponsorship.	50,000	-	-	-
Subtotals continued on next page	\$ 1,950,938	\$ 1,323,187	\$ 1,406,000	\$ 1,285,000

# CANADIAN CONCRETE MASONRY PRODUCERS ASSOCIATION

## LEVY FUND

Note to Financial Statements (continued)

### Commitments

(Unaudited - See Notice to Reader)

December 31, 2010

	Total to 2009	Total 2010	2011	After 2011
Subtotals carried forward	\$ 1,950,938	\$ 1,323,187	\$ 1,406,000	\$ 1,285,000
(x) Secondary engineering support.	38,872	-	-	-
	for year			
(y) Masonry Apprenticeship Training Textbook.	25,000	-	-	-
Totals	\$ 2,014,810	\$ 1,323,187	\$ 1,406,000	\$ 1,285,000

(ii)

(i) Payment amount based on unit block sales.

(ii) Excluding items (b), (j), (p) and (v), each of which have a specified commitment end date, expenditures on the basis of project continuance total to \$930,000 per year.

**CANADIAN CONCRETE MASONRY PRODUCERS ASSOCIATION****LEVY FUND****Block Sales Report****(Unaudited - See Notice to Reader)****For the three months and year ended December 31, 2010**

	<b>Q1</b>	<b>Q2</b>	<b>Q3</b>	<b>Q4</b>
<b>BLOCK SALES</b>				
<b>Quarter totals</b>				
Standard	5,598,588	8,102,236	9,216,612	7,080,299
Lightweight	2,113,615	2,389,372	2,525,611	2,793,563
Architectural	501,599	827,287	806,252	717,790
<b>Total</b>	<b>8,213,802</b>	<b>11,318,895</b>	<b>12,548,475</b>	<b>10,591,652</b>
<b>Year-to-date totals</b>				
Standard	5,598,588	13,700,824	22,917,436	29,997,735
Lightweight	2,113,615	4,502,987	7,028,598	9,822,161
Architectural	501,599	1,328,886	2,135,138	2,852,928
<b>Total</b>	<b>8,213,802</b>	<b>19,532,697</b>	<b>32,081,172</b>	<b>42,672,824</b>
<b>LEVY FEES</b> (1)				
<b>Quarter totals</b>				
Gross amount	\$ 408,476	\$ 558,627	\$ 616,181	\$ 519,884
Less: Administration	(41,069)	(56,595)	(62,742)	(52,958)
<b>Net Levy fees</b>	<b>\$ 367,407</b>	<b>\$ 502,032</b>	<b>\$ 553,439</b>	<b>\$ 466,926</b>
<b>Year-to-date totals</b>				
Gross amount	\$ 408,476	\$ 967,103	\$ 1,583,284	\$ 2,103,168
Less: Administration	(41,069)	(97,664)	(160,406)	(213,364)
<b>Net Levy fees</b>	<b>\$ 367,407</b>	<b>\$ 869,439</b>	<b>\$ 1,422,878</b>	<b>\$ 1,889,804</b>

(1) Levy fees are based on a flat per block rate of 5.0¢ less 0.5¢ for administration. Final total levy amounts include certain levy balances at the pre-2008 net rate of 1.5¢ (2.0¢ less 0.5¢) reflecting charges to respective member customers at the former 2.0¢ per block rate.

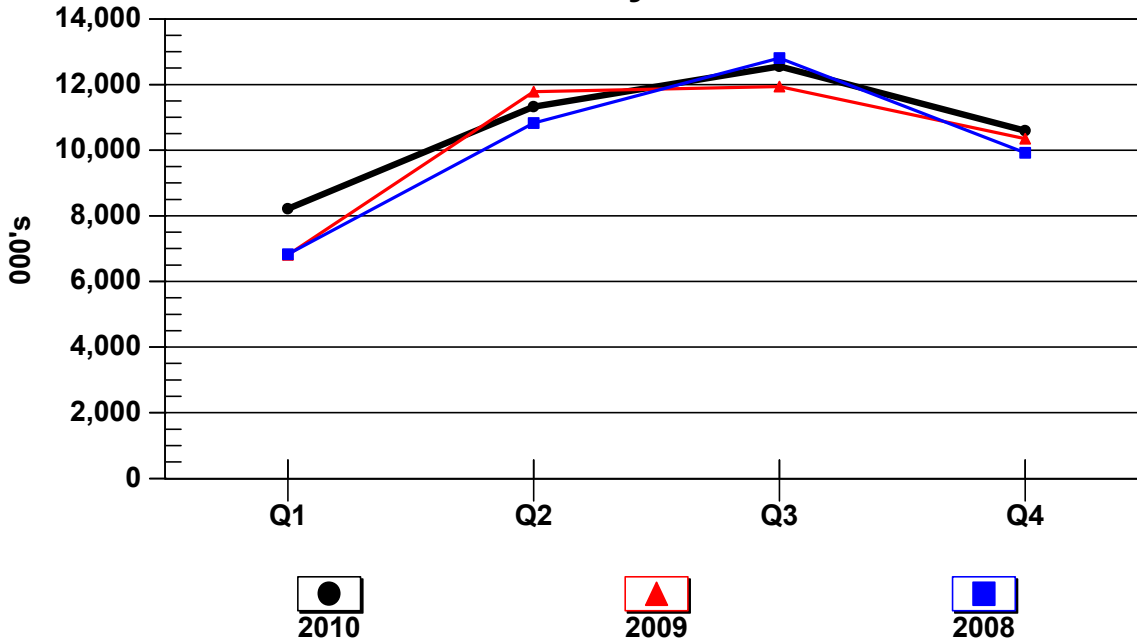
**CANADIAN CONCRETE MASONRY PRODUCERS ASSOCIATION  
LEVY FUND**

Block Sales Report (continued)

(Unaudited - See Notice to Reader)

For the three months and year ended December 31, 2010

**Block Sales by Quarter**



(000's)	Q1	Q2	Q3	Q4
<b>Quarter totals</b>				
2010	8,214	11,319	12,548	10,592
2009	6,810	11,783	11,938	10,353
2008	6,829	10,831	12,802	9,923
<b>Year-to-date totals</b>				
2010	8,214	19,533	32,081	42,673
2009	6,810	18,593	30,531	40,884
2008	6,829	17,660	30,462	40,385