

**CANADIAN CONCRETE MASONRY  
PRODUCERS ASSOCIATION  
LEVY FUND**

**Financial Statements  
(Unaudited - See Notice to Reader)  
First Quarter ended March 31, 2011**



**CANADIAN CONCRETE MASONRY PRODUCERS ASSOCIATION  
LEVY FUND  
Contents  
(Unaudited - See Notice to Reader)  
March 31, 2011**

<b>Notice to Reader</b> .....	1
<b>Financial Statements</b>	
Statement of Financial Position .....	2
Statement of Changes in Net Assets .....	3
Statement of Revenue and Expenses .....	4
Expenses .....	5
Note to Financial Statements .....	6 - 8
<b>Block Sales Report</b> .....	9 - 10



**DIXON, GORDON & CO. LLP**  
CHARTERED ACCOUNTANTS

June 6, 2011

## **NOTICE TO READER**

On the basis of information provided by management, we have compiled the statement of financial position of the Levy Fund of Canadian Concrete Masonry Producers Association as at March 31, 2011 and the statements of revenue and expenses and changes in net assets for the three months then ended.

We have not performed an audit or a review engagement in respect of these financial statements and accordingly, we express no assurance thereon.

Readers are cautioned that these statements may not be appropriate for their purposes.

Respectfully submitted,

*Dixon, Gordon + Co. LLP*

CHARTERED ACCOUNTANTS  
Licensed Public Accountants  
Toronto, Canada

**CANADIAN CONCRETE MASONRY PRODUCERS ASSOCIATION  
LEVY FUND  
Statement of Financial Position  
(Unaudited - See Notice to Reader)  
March 31, 2011**

	<b>March 31 2011</b>	<b>December 31 2010</b>	<b>March 31 2010</b>
		(Audited)	
<b>Assets</b>			
Cash (a)	\$ 399,844	\$ 397,808	\$ 1,067,970
Investment - Guaranteed investment certificates	2,045,965	2,040,059	1,030,982
Accrued levy fees	344,768	466,926	367,407
Prepaid expense	-	2,066	-
	<b>\$ 2,790,577</b>	<b>\$ 2,906,859</b>	<b>\$ 2,466,359</b>
<b>Liabilities</b>			
Accounts payable	\$ 104,581	\$ 39,152	\$ 73,463
Accrued liabilities	24,647	70,535	33,672
Sales tax payable	25,209	26,203	11,023
	<b>154,437</b>	<b>135,890</b>	<b>118,158</b>
<b>Commitments</b> (pages 6-8)			
<b>Net assets</b>			
Net assets internally restricted (page 3)	2,636,140	2,770,969	2,348,201
	<b>\$ 2,790,577</b>	<b>\$ 2,906,859</b>	<b>\$ 2,466,359</b>

(a) Cash balance in bank account as at March 31, 2011 was \$369,046.

See accompanying note

**CANADIAN CONCRETE MASONRY PRODUCERS ASSOCIATION  
LEVY FUND**

**Statement of Changes in Net Assets  
(Unaudited - See Notice to Reader)  
For the three months ended March 31, 2011**

	<b>Year-to-date</b>	
	<b>2011</b>	<b>2010</b>
<b>Net assets, beginning of period</b>	<b>\$ 2,770,969</b>	\$ 2,377,433
(Deficiency) of revenue over expenses (page 4)	<b>(134,829)</b>	(29,232)
<b>Net assets, end of period</b>	<b>\$ 2,636,140</b>	\$ 2,348,201

See accompanying note

**CANADIAN CONCRETE MASONRY PRODUCERS ASSOCIATION  
LEVY FUND**

**Statement of Revenue and Expenses**

**(Unaudited - See Notice to Reader)**

**For the three months ended March 31, 2011**

	<b>Year-to-date</b>	
	<b>2011</b>	<b>2010</b>
<b>Revenue</b>		
Levy fees	\$ 344,768	\$ 367,407
Interest	6,421	1,892
	<b>351,189</b>	369,299
<b>Expenses (page 5)</b>		
Technical programs	391,036	302,300
Advertising and promotion	85,475	91,105
General and administrative	9,507	5,126
	<b>486,018</b>	398,531
<b>(Deficiency) of revenue over expenses</b>	<b>\$ (134,829)</b>	<b>\$ (29,232)</b>

See accompanying note

**CANADIAN CONCRETE MASONRY PRODUCERS ASSOCIATION  
LEVY FUND**

**Expenses**

**(Unaudited - See Notice to Reader)**

**For the three months ended March 31, 2011**

	Year-to-date	
	2011	2010
<b>Technical programs</b>		
University sponsorships	\$ 106,000	\$ 100,000
Design software support contribution	100,750	-
Consulting fees	63,150	63,050
Centre for Architecture - Athabasca University	50,000	-
Canadian Masonry Contractors Association (CMCA) conference sponsorship	-	28,185
National training fund contribution	25,000	25,000
Design software development contribution	-	24,593
Training Centre block delivery	21,020	24,812
Canadian Standards Association (CSA) A165 Standard development	15,000	15,000
Consulting expenses	10,116	5,677
Cement study	-	10,000
Foundation Project	-	4,551
Educational tools	-	1,432
	<b>\$ 391,036</b>	<b>\$ 302,300</b>
<b>Advertising and promotion</b>		
MasonryWorx Association fees	\$ 50,000	\$ 50,000
Masonry Alliance for Codes and Standards membership	12,029	12,945
NCMA fees	11,595	12,321
North American Masonry Conference sponsorship	10,029	5,220
Website	-	2,100
General advertising	1,822	7,382
Masonry Executives Council fees	-	1,137
	<b>\$ 85,475</b>	<b>\$ 91,105</b>
<b>General and administrative</b>		
Accounting and legal	\$ 7,000	\$ 4,953
Travel and meetings	2,215	-
Postage and courier	245	161
Bank charges	47	12
	<b>\$ 9,507</b>	<b>\$ 5,126</b>

See accompanying note

# CANADIAN CONCRETE MASONRY PRODUCERS ASSOCIATION

## LEVY FUND

### Note to Financial Statements

#### Commitments

(Unaudited - See Notice to Reader)

March 31, 2011

	Total to 2010	Forecast 2011		Total 2011	2012	After 2012
		Actual Q1	Forecast Q2-Q4			
(a) Design software-						
(i) Development of the software in partnership with the Canada Masonry Design Centre.	\$ 361,734	\$ -	\$ -	\$ -	\$ -	\$ -
(ii) Funding to National Masonry Design Programs of 50% share of operating costs comprising support for technical assistance and software upgrades.	-	100,750	-	100,750	100,000	100,000 + each year after
(b) University Sponsorships for Dalhousie University, University of Alberta, University of British Columbia, University of Calgary, University of Manitoba, McMaster University, University of New Brunswick and University of Saskatchewan, with seven sponsorships of \$50,000 each per year for five years for a total of \$2,000,000.	502,000	106,000	392,000	498,000	400,000	400,000 in 2013 + \$150,000 in 2014 + \$50,000 in 2015
(c) Consulting fees.	250,250 for 2010	63,150	236,850	300,000	300,000	300,000 + each year after
(d) Block machine for McMaster University.	197,735	-	-	-	-	-
(e) Ontario Masonry Training Centre (OMTC) for \$100,000 in 2011 and each year thereafter in addition to \$775,000 funded over four years to 2010.	775,000	25,000	75,000	100,000	100,000	100,000 + each year after
(f) Marketing of Basement CMU.	-	-	100,000	100,000	100,000	100,000 + each year after
(g) Prolevy fee of 10% payable to the NCMA calculated on the levy fees that would be collected by the Association based on a 1.5 cent per unit levy.	64,009 for 2010	11,595	53,405	65,000	65,000 (i)	65,000 (i)
Subtotals continued on next page	\$ 2,150,728	\$ 306,495	\$ 857,255	\$ 1,163,750	\$ 1,065,000	\$ 1,065,000



# CANADIAN CONCRETE MASONRY PRODUCERS ASSOCIATION

## LEVY FUND

### Note to Financial Statements (continued)

#### Commitments

(Unaudited - See Notice to Reader)

March 31, 2011

	Total to 2010	Forecast 2011		Total 2011	2012	After 2012
		Actual Q1	Forecast Q2-Q4			
Subtotals carried forward	\$ 2,150,728	\$ 306,495	\$ 857,255	\$ 1,163,750	\$ 1,065,000	\$ 1,065,000
(h) Masonry Design Awards, payable to Ontario Masonry Contractors.	71,000	-	-	-	-	-
(i) Materials for Apprenticeship Training and Research for \$50,000 in 2011 and each year thereafter, with \$155,661 funded from 2008 to 2010.	155,661	21,020	28,980	50,000	50,000	50,000 + each year after
(j) Creation of the new Royal Architectural Institute of Canada (RAIC) Centre for Architecture at Athabasca University.	50,000	50,000	-	50,000	50,000	50,000 in both 2013 and 2014
(k) Membership dues to MasonryWorx Association, a marketing group sponsored in part by the Masonry Contractors of Metropolitan Toronto.	50,000 for 2010	50,000	25,000	75,000	75,000	75,000 + each year after
(l) Canadian Masonry Contractors Association (CMCA) fundraiser for Canadian Standards Association (CSA) standards.	93,185	-	-	-	-	-
(m) Educational tools.	82,352	-	23,000	23,000	-	-
(n) Masonry Alliance for Codes and Standards membership	12,945 for 2010	12,029	-	12,029	12,000	12,000 + each year after
(o) Unit Strength Method Corelation Study.	15,044	-	15,000	15,000	15,000	-
(p) CSA standard at \$15,000 per year for five years from 2009 to 2013.	30,000	15,000	-	15,000	15,000	15,000
(q) National Sciences and Engineering Research Council (NSERC) funding.	15,000	-	15,000	15,000	15,000	-
Subtotals continued on next page	\$ 2,725,915	\$ 454,544	\$ 964,235	\$ 1,418,779	\$ 1,297,000	\$ 1,267,000

# CANADIAN CONCRETE MASONRY PRODUCERS ASSOCIATION

## LEVY FUND

Note to Financial Statements (continued)

### Commitments

(Unaudited - See Notice to Reader)

March 31, 2011

	Total to 2010	Forecast 2011		Total 2011	2012	After 2012
		Actual Q1	Forecast Q2-Q4			
Subtotals carried forward	\$ 2,725,915	\$ 454,544	\$ 964,235	\$ 1,418,779	\$ 1,297,000	\$ 1,267,000
(r) Cement study.	30,000	-	10,000	10,000	-	-
(s) Masonry Training Scholarships.	10,000 for 2010	-	10,000	10,000	10,000	10,000 per year
(t) Foundation Project - McMaster University.	87,232	-	10,000	10,000	-	-
(u) Funding to Dr. Svetlana Brzev and Dr. Don Anderson for a Seismic Design Guide.	30,717	-	-	-	-	-
(v) National Research Council (NRC) research.	71,423	-	-	-	-	-
(w) Wall Draining Project (NRC).	3,147	-	20,000	20,000	40,000	-
(x) Canadian Masonry Symposium Sponsorship.	50,000	-	-	-	-	-
(y) Secondary engineering support.	38,872 for 2010	-	-	-	-	-
(z) Masonry Apprenticeship Training Textbook.	25,000	-	-	-	-	-
<b>Totals</b>	<b>\$ 3,072,306</b>	<b>\$ 454,544</b>	<b>\$ 1,014,235</b>	<b>\$ 1,468,779</b>	<b>\$ 1,347,000</b>	<b>\$ 1,277,000</b>

(ii)

(i) Payment amount based on unit block sales.

(ii) Excluding items (b) and (j), each of which have a specified commitment end year, the commitment payments total to \$815,000 per year.

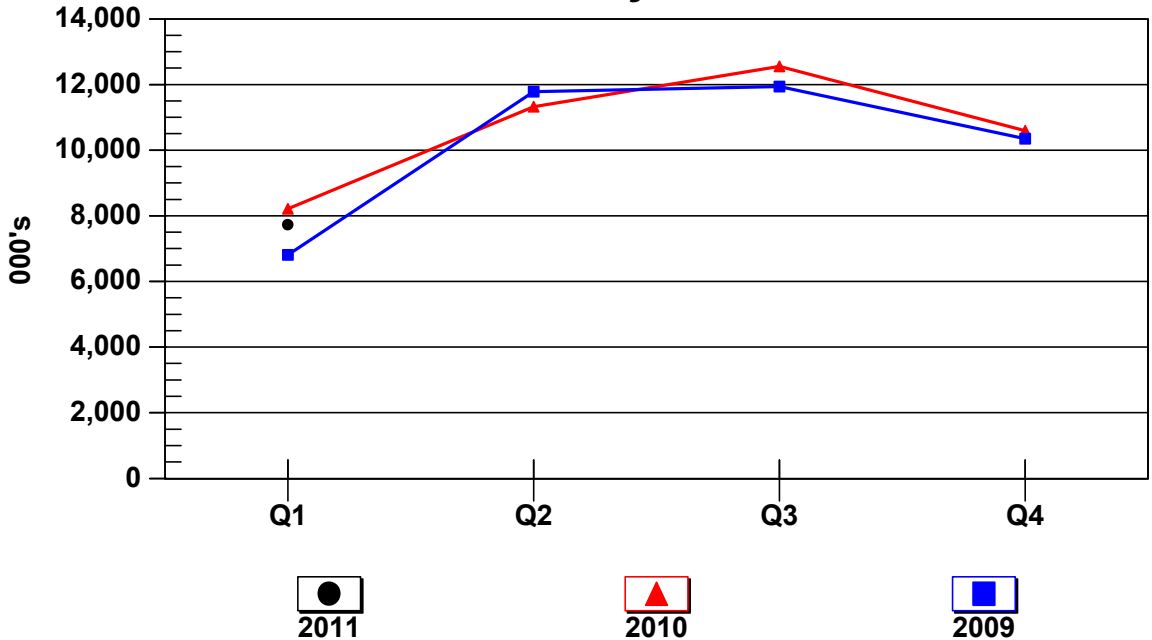
**CANADIAN CONCRETE MASONRY PRODUCERS ASSOCIATION  
 LEVY FUND  
 Block Sales Report  
 (Unaudited - See Notice to Reader)  
 For the three months ended March 31, 2011**

	<b>Q1</b>
<b>BLOCK SALES</b>	
<b>Quarter totals</b>	
Standard	5,049,541
Lightweight	2,256,753
Architectural	423,539
<b>Total</b>	<b>7,729,833</b>
<b>LEVY FEES</b>	
	(1)
<b>Quarter totals</b>	
Gross amount	\$ 383,417
Less: Administration	(38,649)
<b>Net Levy fees</b>	<b>\$ 344,768</b>

(1) Levy fees are based on a flat per block rate of 5.0¢ less 0.5¢ for administration. Final total levy amounts include certain levy balances at the pre-2008 net rate of 1.5¢ (2.0¢ less 0.5¢) reflecting charges to respective member customers at the former 2.0¢ per block rate.

**CANADIAN CONCRETE MASONRY PRODUCERS ASSOCIATION  
 LEVY FUND  
 Block Sales Report (continued)  
 (Unaudited - See Notice to Reader)  
 For the three months ended March 31, 2011**

**Block Sales by Quarter**



(000's)	Q1	Q2	Q3	Q4
<b>Quarter totals</b>				
2011	7,730	N/A	N/A	N/A
2010	8,214	11,319	12,548	10,592
2009	6,810	11,783	11,938	10,353
<b>Year-to-date totals</b>				
2011	7,730	N/A	N/A	N/A
2010	8,214	19,533	32,081	42,673
2009	6,810	18,593	30,531	40,884