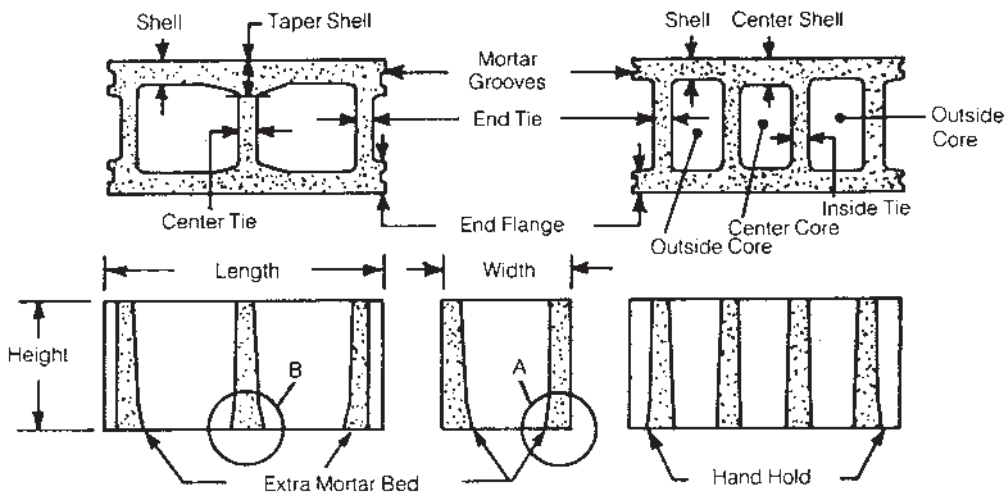
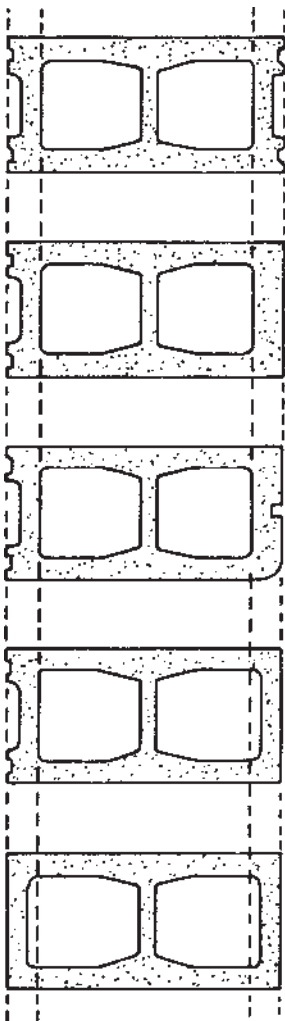


Standard Block Nomenclature



Note: The following nomenclature is the same for 2-core and 3-core block. The 2-core is used here for illustration.



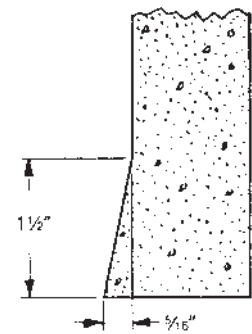
OBE with MG
Open Both Ends with Mortar Grooves

OE with MG-POE
Open End with Mortar Grooves—Plain Other End (Notice thickness of Plain End, unlike Permanent Plain End.)

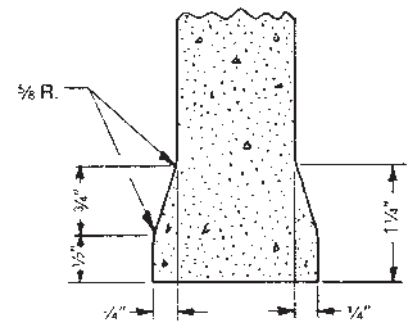
OE with MG-SSOE
Open End with Mortar Grooves—Steel Sash Other End (Also pictured is a Bullnose Corner 1" & 2" radius available on any Plain End Corner.)

OE with MG-PPOE
Open End with Mortar Grooves—Permanent Plain Other End (Notice thickness of Permanent Plain End, unlike Plain End.)

PPBE
Permanent Plain Both Ends



A Extra Mortar Bed



B Hand Hold

Hand Hold (HH) optional on 2 and 3 core block. Dimensions of units: In practice, the first dimension of a concrete masonry unit represents the thickness; the second dimension, the height; the third, length.

Besser Standard 4" Units

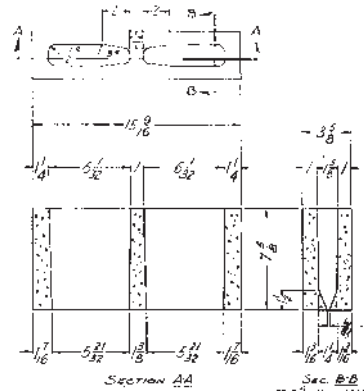
3-5/8" Wide x 7-5/8" High x 15-5/8" Long
 PPBE (Permanent Plain Both Ends)

UNIT No. 02-041265

Pear Shaped Cores
 1" Face Shell
 1" Ties or Webs
No Extra Mortar Bed
No Hand Holds
 8-1/4" High Mold
Part Number
 02-018217
 02-040770J0010
 02-040695
 02-058802

Description
 Plain End Liner
 Core Assembly
 Stripper Shoe
 Removable Plunger

Unit Calculations
 67.79% Solid (Top)
 72.75% Solid (Middle)
 18.44 Lbs. Light Weight Concrete
 25.26 Lbs. Normal Weight Concrete
 2.46 e.t.i. (Top)
 2.64 e.t.i. (Middle)
 318.60 Net Cubic Inches

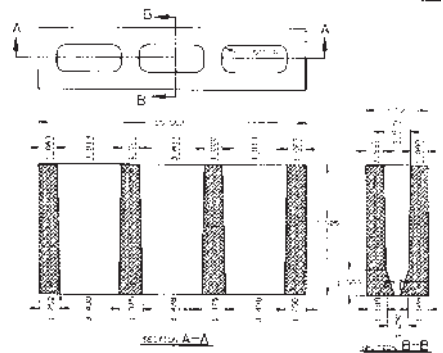


UNIT No. 02-020514

3 Core
 1" Face Shell
 1" Ties or Webs
With Extra Mortar Bed
No Hand Holds
 8-1/4" High Mold
Part Number
 02-018217
 02-020359J0010
 02-017741
 02-053771

Description
 Plain End Liner
 Core Assembly
 Stripper Shoe
 Removable Plunger

Unit Calculations
 68.19% Solid (Top)
 73.43% Solid (Middle)
 18.54 Lbs. Light Weight Concrete
 25.40 Lbs. Normal Weight Concrete
 2.47 e.t.i. (Top)
 2.66 e.t.i. (Middle)
 320.36 Net Cubic Inches



Besser Standard 6" Units

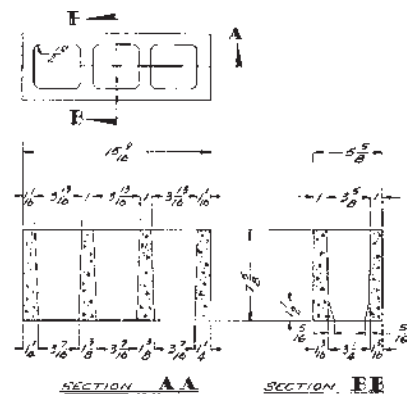
5-5/8" Wide x 7-5/8" High x 15-5/8" Long
 PPBE (Permanent Plain Both Ends)

UNIT No. 02-020531

3 Core
 1" Shell and Tie
With Extra Mortar Bed
With Hand Holds All Ties or Webs
 8-1/4" High Mold
Part Number
 02-017945
 02-017946J0010
 02-017951
 02-051357

Description
 Plain End Liner
 Core Assembly
 Stripper Shoe
 Removable Plunger

Unit Calculations
 53.37% Solid (Top)
 58.03% Solid (Middle)
 22.69 Lbs. Light Weight Concrete
 31.09 Lbs. Normal Weight Concrete
 3.00 e.t.i. (Top)
 3.26 e.t.i. (Middle)
 392.11 Net Cubic Inches

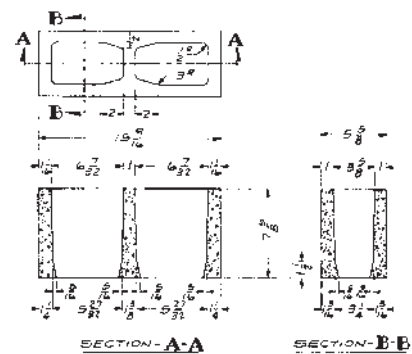


UNIT No. 02-058701

Pear Shaped Cores
 1-1/4" Face Shell
 1" Ties or Webs
With Extra Mortar Bed
With Hand Holds All Ties or Webs
 8-1/4" High Mold
Part Number
 02-017945
 02-052435J0010
 02-052467
 02-058864

Description
 Plain End Liner
 Core Assembly
 Stripper Shoe
 Removable Plunger

Unit Calculations
 51.30% Solid (Top)
 55.40% Solid (Middle)
 21.84 Lbs. Light Weight Concrete
 29.93 Lbs. Normal Weight Concrete
 2.88 e.t.i. (Top)
 3.11 e.t.i. (Middle)
 378.45 Net Cubic Inches

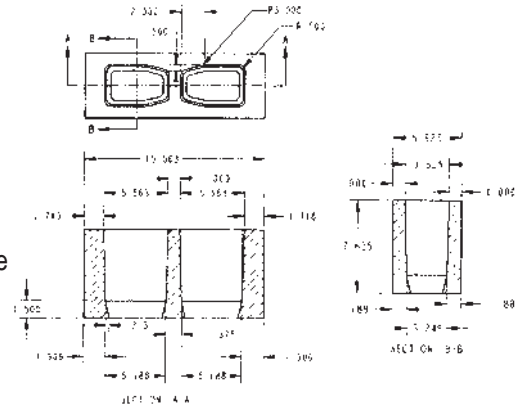


UNIT No. 02-078625

Pear Shaped Cores
 1" - 1-1/2" Shell
 1" Tie

Unit Calculations

56.71% Solid (Top)
 60.56% Solid (Middle)
 23.89 Lbs. Light Weight Concrete
 32.73 Lbs. Normal Weight Concrete
 3.19 e.t.i. (Top)
 3.41 e.t.i. (Middle)
 412.85 Net Cubic Inches



With Extra Mortar Bed

| Part Number | Description |
|---------------|-------------------|
| 02-017945 | Plain End Liner |
| 02-53342J0010 | Core Assembly |
| 02-49495J0100 | Stripper Shoe |
| 02-053393 | Removable Plunger |

Besser Standard 6" Units

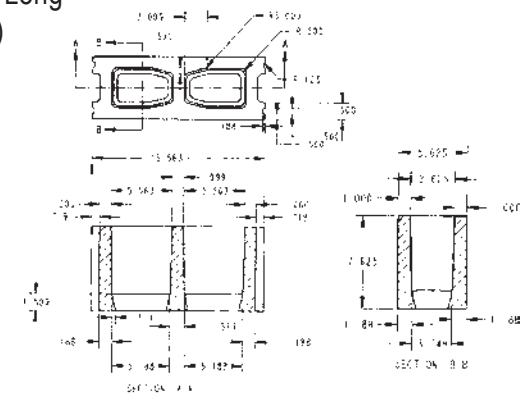
5-5/8" Wide x 7-5/8" High x 15-5/8" Long
 OEBE (Open Ends Both Ends)

UNIT No. 02-048345

Pear Shaped Cores
 1" - 1-1/2" Shell
 1" Tie

Unit Calculations

52.25% Solid (Top)
 56.11% Solid (Middle)
 22.10 Lbs. Light Weight Concrete
 30.28 Lbs. Heavy Weight Concrete
 2.93 e.t.i. (Top)
 3.15 e.t.i. (Middle)
 382.31 Net Cubic Inches



With Extra Mortar Bed

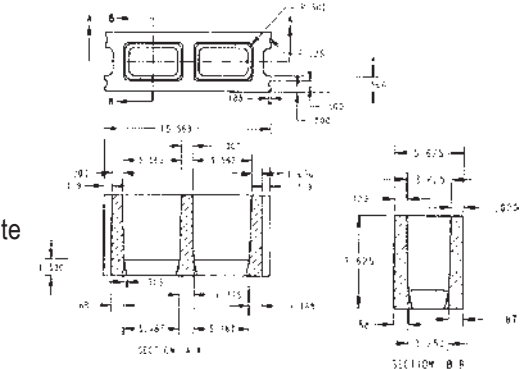
| Part Number | Description |
|----------------|-------------------|
| 02-045265 | Mold End Liner |
| 02-053342J0010 | Core Assembly |
| 02-049495J0140 | Stripper Shoe |
| 02-053393 | Removable Plunger |

UNIT No. 02-419976

Rectangular Cores
 1" Straight Shell
 1" Tie

Unit Calculations

49.96% Solid (Top)
 53.81% Solid (Middle)
 21.25 Lbs. Light Weight Concrete
 29.12 Lbs. Normal Weight Concrete
 2.81 e.t.i. (Top)
 3.03 e.t.i. (Middle)
 367.24 Net Cubic Inches



With Extra Mortar Bed

| Part Number | Description |
|----------------|-------------------|
| 02-045265 | Mold End Liner |
| 02-339352J0010 | Core Assembly |
| 02-251657J0140 | Stripper Shoe |
| 02-053393 | Removable Plunger |

Besser Standard 6" Units

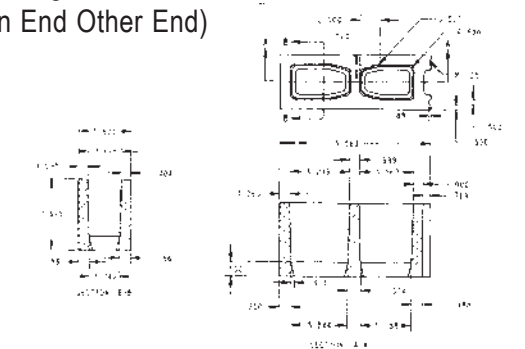
5-5/8" Wide x 7-5/8" High x 15-5/8" Long
 PPOE-OEOE (Permanent Plain One End - Open End Other End)

UNIT No. 02-058695

Pear Shaped Cores
 1" - 1-1/2" Shell
 1" Tie

Unit Calculations

52.73% Solid (Top)
 56.69% Solid (Middle)
 22.38 Lbs. Light Weight Concrete
 30.67 Lbs. Heavy Weight Concrete
 2.97 e.t.i. (Top)
 3.19 e.t.i. (Middle)
 386.81 Net Cubic Inches



With Extra Mortar Bed

| Part Number | Description |
|----------------|-------------------|
| 02-017945 | Plain End Liner |
| 02-045265 | Mold End Liner |
| 02-053342J0520 | Core Assembly |
| 02-058698J0900 | Stripper Shoe |
| 02-058699 | Removable Plunger |

Besser Standard 8" Units

 7-5/8" Wide x 7-5/8" High x 15-5/8" Long
 OEBE (Open Ends Both Ends)

UNIT No. 02-046602

 Pear Shaped Cores
 1-1/4" Face Shell
 1" Ties or Webs

With Extra Mortar Bed
With Hand Holds All Ties or Webs

8-1/4" High Mold

Part Number

02-043986

02-046699J0010

02-046700J0140

02-043992

Description

Mold End Liner

Core Assembly

Stripper Shoe

Removable Plunger

Unit Calculations

49.64% Solid (Top)

52.96% Solid (Middle)

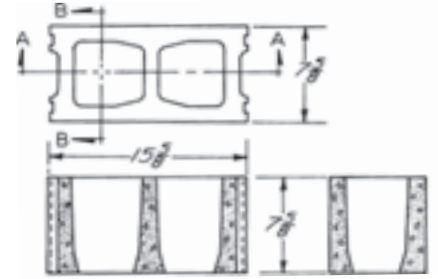
28.23 Lbs. Light Weight Concrete

38.68 Lbs. Normal Weight Concrete

3.79 e.t.i. (Top)

4.04 e.t.i. (Middle)

487.87 Net Cubic Inches


UNIT No. 02-068865

 Pear Shaped Cores
 1-1/4" Face Shell
 1" Tie or Webs

No Extra Mortar Bed
No Hand Holds

8-1/4" High Mold

Part Number

02-043986

02-057633J0010

02-046700J0140

02-043992

Description

Mold End Liner

Core Assembly

Stripper Shoe

Removable Plunger

Unit Calculations

49.64% Solid (Top)

52.96% Solid (Middle)

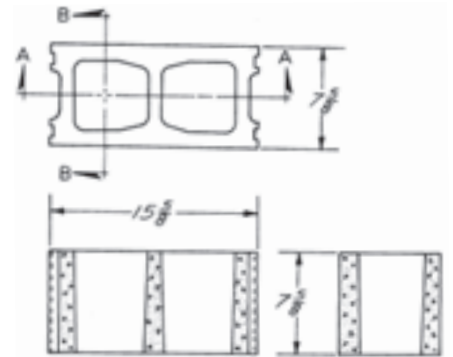
27.73 Lbs. Light Weight Concrete

37.99 Lbs. Normal Weight Concrete

3.79 e.t.i. (Top)

4.04 e.t.i. (Middle)

479.20 Net Cubic Inches


UNIT No. 02-214167

 Pear Shaped Cores
 1-1/4" Face Shell
 1" Ties or Webs

No Extra Mortar Bed
Hand Hold Center Tie or Web Only

8-1/4" High Mold

Part Number

02-043986

02-066607J0010

02-046700J0140

02-043992

Description

Mold End Liner

Core Assembly

Stripper Shoe

Removable Plunger

Unit Calculations

49.64% Solid (Top)

52.96% Solid (Middle)

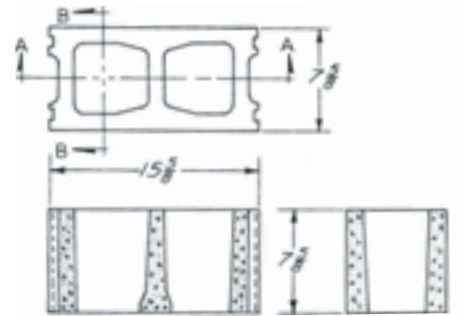
27.81 Lbs. Light Weight Concrete

38.10 Lbs. Normal Weight Concrete

3.79 e.t.i. (Top)

4.05 e.t.i. (Middle)

481.11 Net Cubic Inches


UNIT No. 02-251205

 Rectangular Cores
 1-1/4" Face Shell
 1" Tie or Webs

No Extra Mortar Bed
Hand Hold Center Tie or Web Only

8-1/4" High Mold

Part Number

02-043986

02-251207J0010

02-239503J0140

02-043992

Description

Mold End Liner

Core Assembly

Stripper Shoe

Removable Plunger

Unit Calculations

47.96% Solid (Top)

51.28% Solid (Middle)

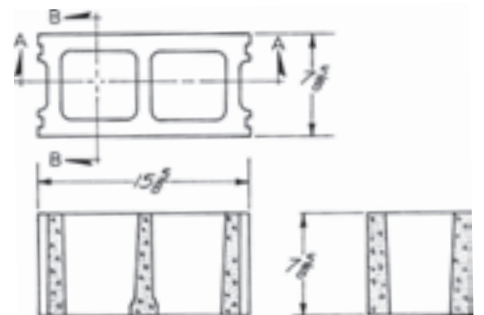
26.93 Lbs. Light Weight Concrete

36.90 Lbs. Normal Weight Concrete

3.66 e.t.i. (Top)

3.93 e.t.i. (Middle)

465.86 Net Cubic Inches



Besser Standard 8" Units

7-5/8" Wide x 7-5/8" High x 15-5/8" Long

PPOE-OEOE (Permanent Plain One End-Open End Other End)

UNIT No. 02-057880

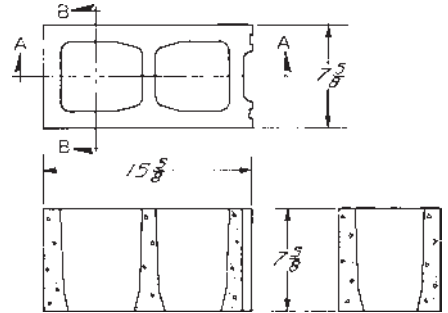
Pear Shaped Cores
1-1/4" Face Shell
1" Ties or Webs

With Extra Mortar Bed
With Hand Hold All Ties or Webs

8-1/4" High Mold

| Part Number | Description |
|----------------|-------------------|
| 02-017712 | Plain End Liner |
| 02-043986 | Mold End Liner |
| 02-046699J0520 | Core Assembly |
| 02-057791J0900 | Stripper Shoe |
| 02-057874 | Removable Plunger |

| Unit Calculations |
|-----------------------------------|
| 49.90% Solid (Top) |
| 53.29% Solid (Middle) |
| 23.53 Lbs. Light Weight Concrete |
| 39.09 Lbs. Normal Weight Concrete |
| 3.81 e.t.i. (Top) |
| 4.06 e.t.i. (Middle) |
| 491.53 Net Cubic Inches |



UNIT No. 02-207731

Pear Shaped Cores
1-1/4" Face Shell
1" Ties or Webs

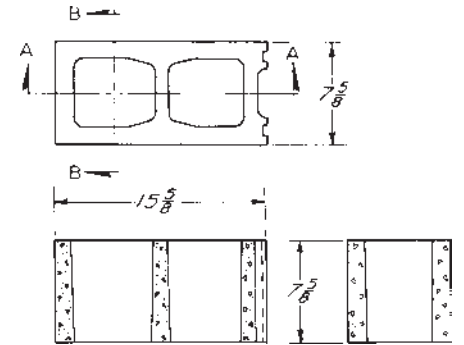
No Extra Mortar Bed

No Hand Holds

8-1/4" High Mold

| Part Number | Description |
|----------------|-------------------|
| 02-017712 | Plain End Liner |
| 02-043986 | Mold End Liner |
| 02-057633J0520 | Core Assembly |
| 02-057791J0900 | Stripper Shoe |
| 02-057874 | Removable Plunger |

| Unit Calculations |
|-----------------------------------|
| 49.90% Solid (Top) |
| 53.29% Solid (Middle) |
| 27.87 Lbs. Light Weight Concrete |
| 38.19 Lbs. Normal Weight Concrete |
| 3.81 e.t.i. (Top) |
| 4.06 e.t.i. (Middle) |
| 482.18 Net Cubic Inches |



UNIT No. 02-242047

Pear Shaped Cores
1-1/4" Face Shell
1" Ties or Webs

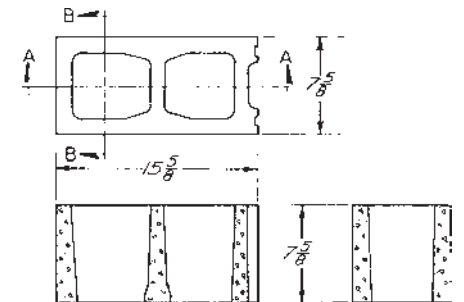
No Extra Mortar Bed

Hand Hold Center Tie or Web Only

8-1/4" High Mold

| Part Number | Description |
|----------------|-------------------|
| 02-017712 | Plain End Liner |
| 02-043986 | Mold End Liner |
| 02-066607J0520 | Core Assembly |
| 02-057791J0900 | Stripper Shoe |
| 02-057874 | Removable Plunger |

| Unit Calculations |
|-----------------------------------|
| 49.90% Solid (Top) |
| 53.29% Solid (Middle) |
| 28.04 Lbs. Light Weight Concrete |
| 38.42 Lbs. Normal Weight Concrete |
| 3.81 e.t.i. (Top) |
| 4.06 e.t.i. (Middle) |
| 483.98 Net Cubic Inches |



UNIT No. 02-251206

Rectangular Cores
1-1/4" Face Shell
1" Ties or Webs

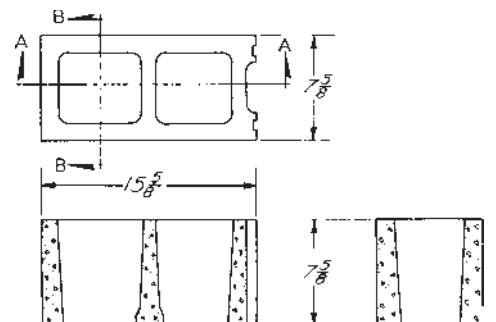
No Extra Mortar Bed

Hand Hold Center Tie or Web Only

8-1/4" High Mold

| Part Number | Description |
|----------------|-------------------|
| 02-017712 | Plain End Liner |
| 02-043986 | Mold End Liner |
| 02-251207J0520 | Core Assembly |
| 02-251211J0900 | Stripper Shoe |
| 02-057874 | Removable Plunger |

| Unit Calculations |
|-----------------------------------|
| 48.21% Solid (Top) |
| 51.60% Solid (Middle) |
| 27.61 Lbs. Light Weight Concrete |
| 37.21 Lbs. Normal Weight Concrete |
| 3.68 e.t.i. (Top) |
| 3.93 e.t.i. (Middle) |
| 469.33 Net Cubic Inches |



Besser Standard 8" Units

 7-5/8" Wide x 7-5/8" High x 15-5/8" Long
 PPBE (Permanent Plain Both Ends)

UNIT No. 02-024109

 Pear Shaped Cores
 1-1/4" Face Shell
 1" Ties or Webs

With Extra Mortar Bed
With Hand Hold All Ties or Webs

8-1/4" High Mold

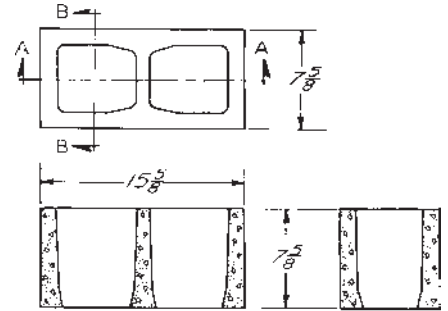
Part Number

 02-017712
 02-020703J0010
 02-020704
 02-020705

Description

 Plain End Liner
 Core Assembly
 Stripper Shoe
 Removable Plunger

Unit Calculations

 50.15% Solid (Top)
 53.62% Solid (Middle)
 28.93 Lbs. Light Weight Concrete
 39.63 Lbs. Normal Weight Concrete
 3.82 e.t.i. (Top)
 4.09 e.t.i. (Middle)
 499.84 Net Cubic Inches

UNIT No. 02-050148

 Pear Shaped Cores
 1-1/4" Face Shell
 1" Ties or Webs

No Extra Mortar Bed
No Hand Holds

8-1/4" High Mold

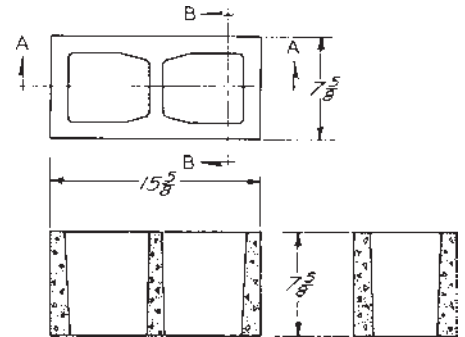
Part Number

 02-017712
 02-035440J0010
 02-020704
 02-020705

Description

 Plain End Liner
 Core Assembly
 Stripper Shoe
 Removable Plunger

Unit Calculations

 50.15% Solid (Top)
 53.62% Solid (Middle)
 28.04 Lbs. Light Weight Concrete
 38.42 Lbs. Normal Weight Concrete
 3.82 e.t.i. (Top)
 4.08 e.t.i. (Middle)
 485.16 Net Cubic Inches

UNIT No. 02-066050

 Pear Shaped Cores
 1-1/4" Face Shell
 1" Ties or Webs

No Extra Mortar Bed
Hand Hold Center Tie or Web Only

8-1/4" High Mold

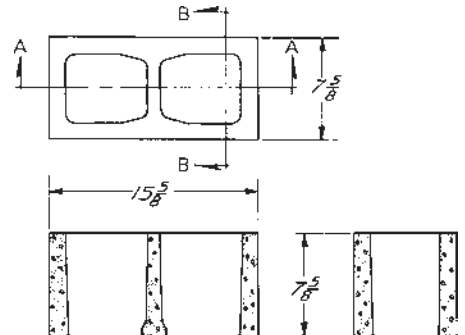
Part Number

 02-017712
 02-063784J0010
 02-020704
 02-020705

Description

 Plain End Liner
 Core Assembly
 Stripper Shoe
 Removable Plunger

Unit Calculations

 50.15% Solid (Top)
 53.62% Solid (Middle)
 28.22 Lbs. Light Weight Concrete
 38.66 Lbs. Normal Weight Concrete
 3.82 e.t.i. (Top)
 4.09 e.t.i. (Middle)
 487.56 Net Cubic Inches

UNIT No. 02-223924

 Rectangular Cores
 1-1/4" Face Shell
 1" Ties or Webs

No Extra Mortar Bed
Hand Hold Center Tie or Web Only

8-1/4" High Mold

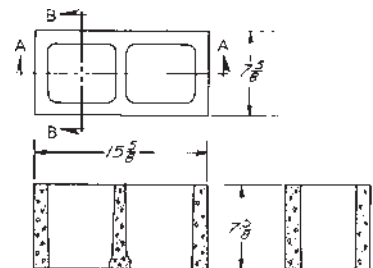
Part Number

 02-017712
 02-251721J0010
 02-223565
 02-020705

Description

 Plain End Liner
 Core Assembly
 Stripper Shoe
 Removable Plunger

Unit Calculations

 48.47% Solid (Top)
 51.93% Solid (Middle)
 27.32 Lbs. Light Weight Concrete
 37.43 Lbs. Normal Weight Concrete
 3.70 e.t.i. (Top)
 3.96 e.t.i. (Middle)
 472.15 Net Cubic Inches


Besser Standard 10" Units

9-5/8" Wide x 7-5/8" High x 15-5/8" Long
 OEBE (Open Ends Both Ends)

UNIT No. 02-046698

Pear Shaped Cores
 1-1/2" to 2" Shell
 1-1/8" Ties or Webs

With Extra Mortar Bed

With Hand Hold All Ties or Webs

8-1/4" High Mold

Part Number

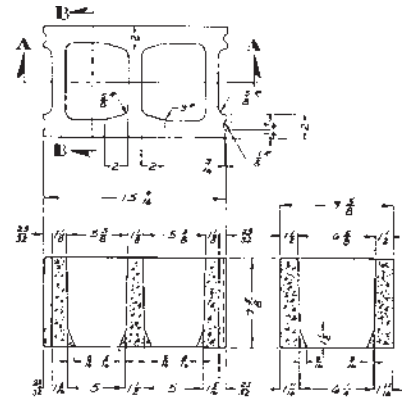
02-045700
 02-046702J0010
 02-046703J0140
 02-045705

Description

Mold End Liner
 Core Assembly
 Stripper Shoe
 Removable Plunger

Unit Calculations

48.70% Solid (Top)
 51.70% Solid (Middle)
 34.20 Lbs. Light Weight Concrete
 46.80 Lbs. Normal Weight Concrete
 4.69 e.t.i. (Top)
 4.97 e.t.i. (Middle)
 605.81 Net Cubic Inches



UNIT No. 02-376108

Rectangular Cores

1-1/2" Shell

1-1/8" Tie

No Extra Mortar Bed

Hand Hold on Center Tie Only on OEBE

8-1/4" High Mold

Part Number

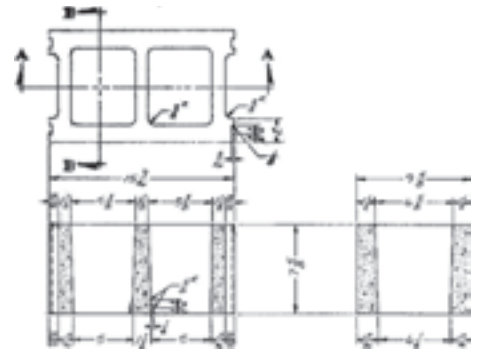
02-045700
 02-290181J0010
 02-260707J0140
 02-045705

Description

Mold End Liner
 Core Assembly
 Stripper Shoe
 Removable Plunger

Unit Calculations

47.37% Solid (Top)
 50.33% Solid (Middle)
 33.38 Lbs. Light Weight Concrete
 45.47 Lbs. Normal Weight Concrete
 4.56 e.t.i. (Top)
 4.84 e.t.i. (Middle)
 577.54 Net Cubic Inches



800.530.9991

Besser Standard 12" Units

11-5/8" Wide x 7-5/8" High x 15-5/8" Long
 OEBE (Open Ends Both Ends)

UNIT No. 02-046706

Pear Shaped Cores
 1-1/2" to 2" Shell
 1-1/4" Ties or Webs

With Extra Mortar Bed

With Hand Hold All Ties or Webs

8-1/4" High Mold

Part Number

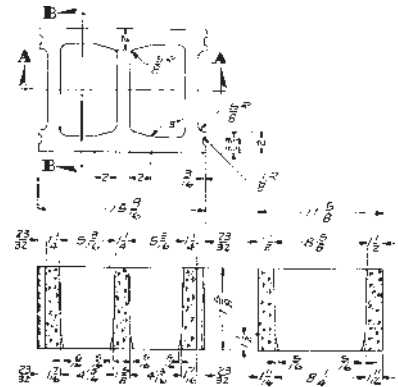
- 02-045215
- 02-046704J0010
- 02-046705J0140
- 02-045221

Description

- Mold End Liner
- Core Assembly
- Stripper Shoe
- Removable Plunger

Unit Calculations

- 45.84% Solid (Top)
- 48.67% Solid (Middle)
- 39.55 Lbs. Light Weight Concrete
- 54.19 Lbs. Normal Weight Concrete
- 5.33 e.t.i. (Top)
- 5.66 e.t.i. (Middle)
- 683.45 Net Cubic Inches



UNIT No. 02-312870

Rectangular Cores

1-1/2" Straight Shell

1-1/4" Tie

1-1/2" End Flange

No Extra Mortar Bed

Hand Hold on Center

8-1/4" High Mold

Part Number

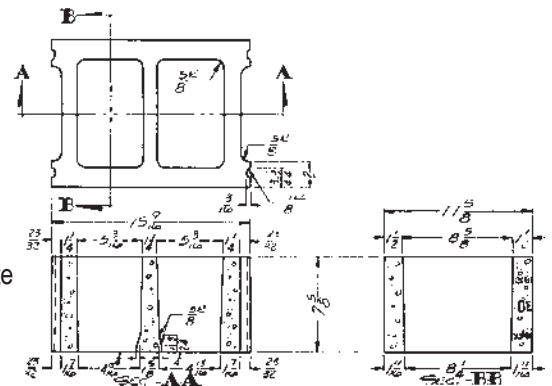
- 02-045215
- 02-267967J0010
- 02-260714J0140
- 02-045221

Description

- Mold End Liner
- Core Assembly
- Stripper Shoe
- Removable Plunger

Unit Calculations

- 44.74% Solid (Top)
- 47.56% Solid (Middle)
- 38.20 Lbs. Light Weight Concrete
- 52.34 Lbs. Normal Weight Concrete
- 5.20 e.t.i. (Top)
- 5.53 e.t.i. (Middle)
- 660.16 Net Cubic Inches



Besser Concave Cores for Sash Units

4-5/8" Wide x 7-5/8" High x 15-5/8" Long

UNIT No. 02-397182

2 Core

1" Face Shell

1" Tie

No Extra Mortar Bed

Part Number

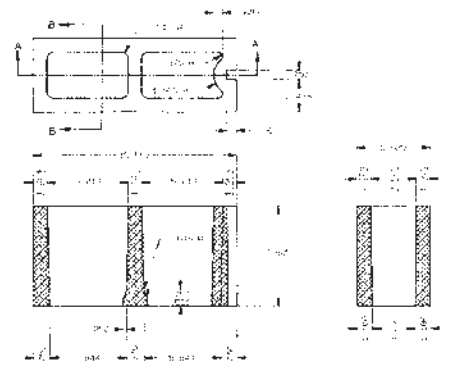
- 02-017945
- 02-017945J0090
- 02-397184
- 02-397185
- 02-058864

Description

- Plain End Liner
- Steel Sash Liner
- Core Assembly
- Stripper Shoe
- Removable Plunger

Unit Calculations

- 47.43% Solid (Top)
- 51.57% Solid (Middle)
- 19.95 lbs. Light Weight Concrete
- 27.34 lbs. Normal Weight Concrete
- 2.69 e.t.i. (Top)
- 2.91 e.t.i. (Middle)
- 345.14 Net Cubic Inches



Besser Concave Cores for Sash Units

5-5/8" Wide x 7-5/8" High x 15-5/8" Long

UNIT No. 02-441953

2 Core

1" Face Shell

1" Tie

No Extra Mortar Bed

Part Number

02-017945

02-017945J0090

02-484554

02-441957J2640

02-056482

Description

Plain End Liner

Steel Sash Liner

Core Assembly

Stripper Shoe

Removable Plunger

Unit Calculations

51.59% Solid (Top)

55.52% Solid (Middle)

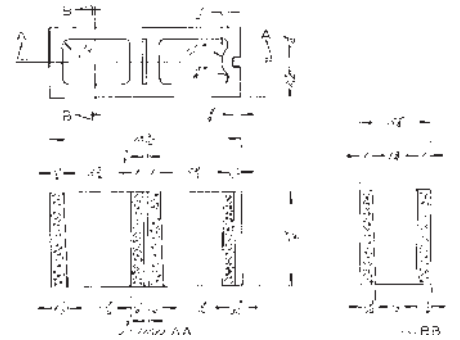
21.42 lbs. Light Weight Concrete

29.35 lbs. Normal Weight Concrete

2.90 e.t.i. (Top)

3.12 e.t.i. (Middle)

370.62 Net Cubic Inches



Besser Concave Cores for Sash Units

7-5/8" Wide x 7-5/8" High x 15-5/8" Long

UNIT No. 02-353094

2 Core

1-1/4" Face Shell

1" Tie

No Extra Mortar Bed

Part Number

02-017712

02-017712J0090

02-318625

02-270584J2640

02-020705

Description

Plain End Liner

Steel Sash Liner

Core Assembly

Stripper Shoe

Removable Plunger

Unit Calculations

48.67% Solid (Top)

52.13% Solid (Middle)

27.44 lbs. Light Weight Concrete

37.59 lbs. Normal Weight Concrete

3.71 e.t.i. (Top)

3.98 e.t.i. (Middle)

474.12 Net Cubic Inches



Besser Concave Cores for Sash Units

7-5/8" Wide x 7-5/8" High x 15-5/8" Long

UNIT No. 02-292387

2 Core

1-1/4" Face Shell

7/8" Tie

No Extra Mortar Bed

Part Number

02-017712

02-017712J0090

02-292379

02-296202J2640

02-232407

Description

Plain End Liner

Steel Sash Liner

Core Assembly

Stripper Shoe

Removable Plunger

Unit Calculations

51.91% Solid (Top)

55.25% Solid (Middle)

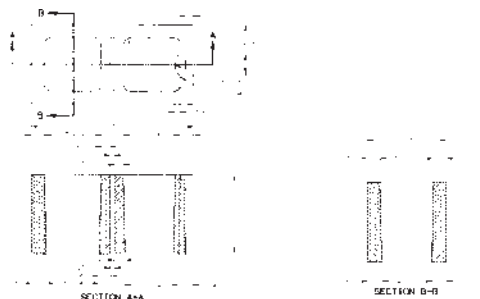
28.93 lbs. Light Weight Concrete

39.64 lbs. Normal Weight Concrete

3.96 e.t.i. (Top)

4.21 e.t.i. (Middle)

499.95 Net Cubic Inches



Besser Concave Cores for Sash Units

9-5/8" Wide x 7-5/8" High x 15-5/8" Long

UNIT No. 02-432223

2 Core

1-1/2" Face Shell

1-1/8" Tie

No Extra Mortar Bed

Part Number

02-018013

02-018013J0092

02-291286

02-260704

02-260705

02-260703

Description

Plain End Liner

Steel Sash Liner

Core Assembly

Stripper Shoe PPBE

Stripper Shoe SSOE

Removable Plunger

Unit Calculations

50.00% Solid (Top)

53.04% Solid (Middle)

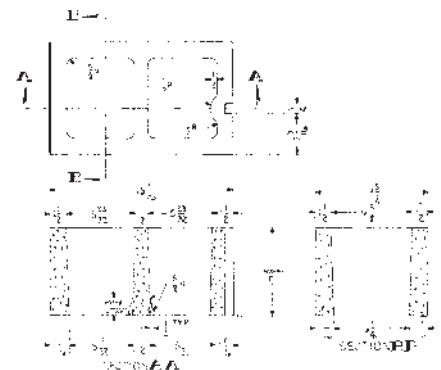
35.17 lbs. Light Weight Concrete

48.20 lbs. Normal Weight Concrete

4.81 e.t.i. (Top)

5.10 e.t.i. (Middle)

608.53 Net Cubic Inches



Besser Concave Cores for Sash Units

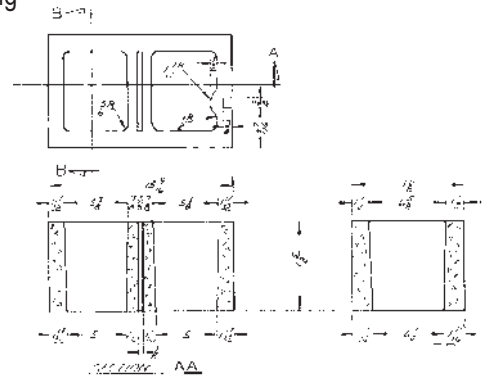
9-5/8" Wide x 7-5/8" High x 15-5/8" Long

UNIT No. 02-440811

2 Core
1-1/2" Face Shell
7/8" Tie

No Extra Mortar Bed

| Part Number | Description | Unit Calculations |
|----------------|--------------------|-----------------------------------|
| 02-018013 | Plain End Liner | 48.12% Solid (Top) |
| 02-018013J0092 | Steel Sash Liner | 51.19% Solid (Middle) |
| 02-506219 | Core Assembly | 33.79 lbs. Light Weight Concrete |
| 02-440814 | Stripper Shoe PPBE | 46.30 lbs. Normal Weight Concrete |
| 02-440815J2640 | Stripper Shoe SSOE | 4.63 e.t.i. (Top) |
| 02-354141 | Removable Plunger | 4.93 e.t.i. (Middle) |
| | | 584.66 Net Cubic Inches |



Besser Concave Cores for Sash Units

11-5/8" Wide x 7-5/8" High x 15-5/8" Long

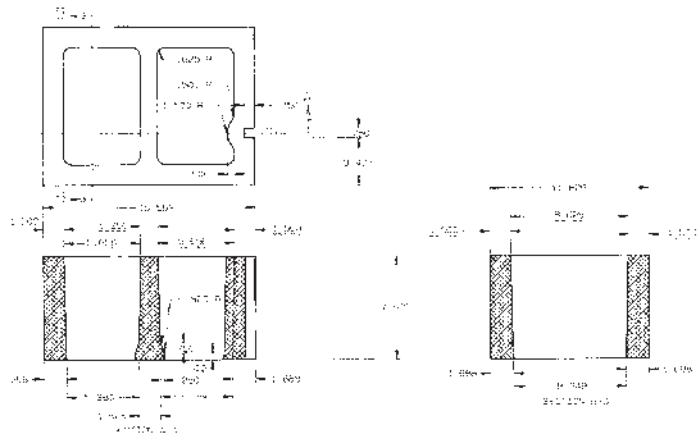
UNIT No. 02-402698

2 Core
1-1/2" Face Shell
1-1/4" Tie

No Extra Mortar Bed

| Part Number | Description |
|----------------|--------------------|
| 02-017803 | Plain End Liner |
| 02-017803J0092 | Steel Sash Liner |
| 02-291281 | Core Assembly |
| 02-260712 | Stripper Shoe SSOE |
| 02-257384 | Stripper Shoe PPBE |
| 02-211469 | Removable Plunger |

| Unit Calculations |
|-----------------------------------|
| 46.57% Solid (Top) |
| 49.49% Solid (Middle) |
| 39.74 lbs. Light Weight Concrete |
| 54.45 lbs. Normal Weight Concrete |
| 5.41 e.t.i. (Top) |
| 5.75 e.t.i. (Middle) |
| 686.76 Net Cubic Inches |



Besser Concave Cores for Sash Units

11-5/8" Wide x 7-5/8" High x 15-5/8" Long

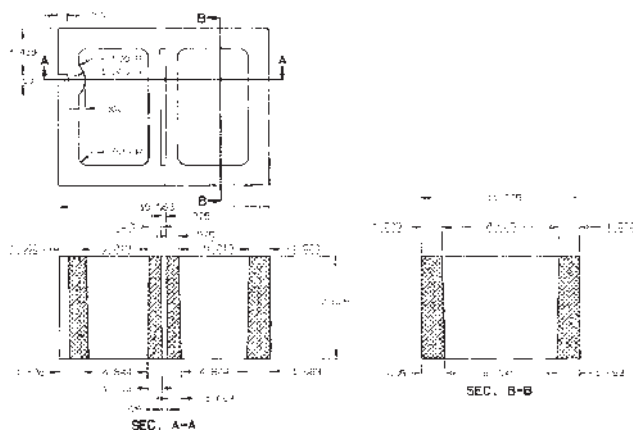
UNIT No. 02-395327

2 Core
1-1/2" Face Shell
7/8" Tie

No Extra Mortar Bed

| Part Number | Description |
|----------------|--------------------|
| 02-017803 | Plain End Liner |
| 02-017803J0092 | Steel Sash Liner |
| 02-395329 | Core Assembly |
| 02-375899J2640 | Stripper Shoe SSOE |
| 02-375898 | Stripper Shoe PPBE |
| 02-241453 | Removable Plunger |

| Unit Calculations |
|-----------------------------------|
| 48.95% Solid (Top) |
| 51.82% Solid (Middle) |
| 41.37 lbs. Light Weight Concrete |
| 56.68 lbs. Normal Weight Concrete |
| 5.69 e.t.i. (Top) |
| 6.02 e.t.i. (Middle) |
| 714.88 Net Cubic Inches |



Besser Standard 90 mm Wide Units

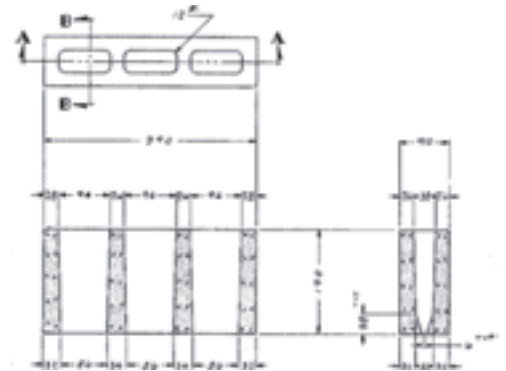
90 mm Wide x 190 mm High x 390 mm Long
PPBE (Permanent Plain Both Ends)

UNIT No. 02-324397

3 Core
26 mm Shell and Tie
With Extra Mortar Bed
232 mm High Division Plates
206 mm High Mold

| Part Number | Description |
|----------------|-------------------|
| 02-338207M | Plain End Liner |
| 02-338935M0010 | Core Assembly |
| 02-324406 | Stripper Shoe |
| 02-324408 | Removable Plunger |

| Unit Calculations |
|---------------------------------|
| 70.53% Solid (Top) |
| 74.62% Solid (Middle) |
| 8.20 kg Light Weight Concrete |
| 11.23 kg Normal Weight Concrete |
| 63.47 e.t.mm. (Top) |
| 67.06 e.t.mm. (Middle) |
| 5117.19 Net Cubic Centimeters |



Besser Standard 140 mm Wide Units

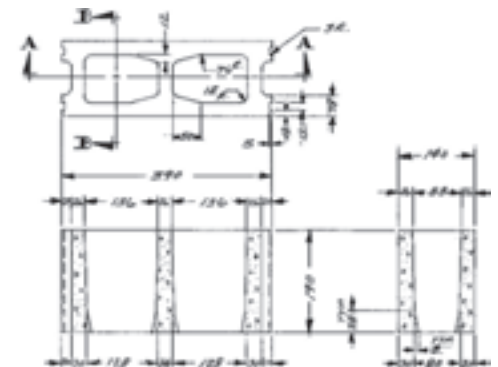
140 mm Wide x 190 mm High x 390 mm Long
OEBE (Open End Both Ends)

UNIT No. 02-336308

2 Core
26 mm to 38 mm Face Shell
26 mm Tie
With Extra Mortar Bed
232 mm High Division Plates
206 mm High Mold

| Part Number | Description |
|----------------|-------------------|
| 02-338873M | Mold End Liner |
| 02-338874M0010 | Core Assembly |
| 02-340971M0140 | Stripper Shoe |
| 02-336315M | Removable Plunger |

| Unit Calculations |
|---------------------------------|
| 53.90% Solid (Top) |
| 57.13% Solid (Middle) |
| 9.87 kg Light Weight Concrete |
| 13.52 kg Normal Weight Concrete |
| 75.46 e.t.mm. (Top) |
| 79.98 e.t.mm. (Middle) |
| 6160.91 Net Cubic Centimeters |



Besser Standard 140 mm Wide Units

140 mm Wide x 190 mm High x 390 mm Long
PPOE-OEOE (Permanent Plain One End-Open End Other End)

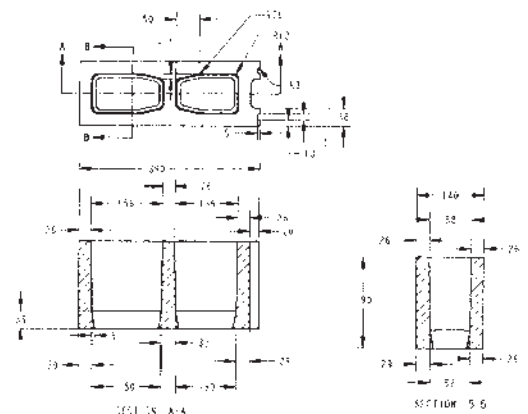
UNIT No. 02-339161

Pear Shaped Cores
26 mm to 38 mm Shell
26 mm Tie

With Extra Mortar Bed

| Part Number | Description |
|----------------|-------------------|
| 02-338362M | Plain End Liner |
| 02-338873M | Mold End Liner |
| 02-338874M0520 | Core Assembly |
| 02-339164M0900 | Stripper Shoe |
| 02-339166M | Removable Plunger |

| Unit Calculations |
|---------------------------------|
| 50.94% Solid (Top) |
| 54.31% Solid (Middle) |
| 9.20 kg Light Weight Concrete |
| 12.60 kg Normal Weight Concrete |
| 71.31 e.t.mm. (Top) |
| 76.03 e.t.mm. (Middle) |
| 5740.35 Net Cubic Centimeters |



Besser Standard 140 mm Wide Units

140 mm Wide x 190 mm High x 390 mm Long
PPBE (Permanent Plain Both Ends)

UNIT No. 02-339162

Pear Shaped Cores
26mm - 38 mm Shell
26 mm Tie

With Extra Mortar Bed

Part Number

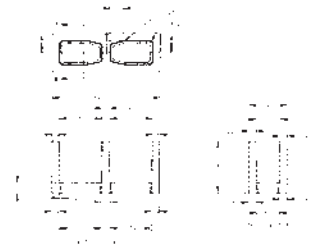
02-338362M
02-339163M0010
02-339165M
02-338366

Description

Plain End Liner
Core Assembly
Stripper Shoe
Removable Plunger

Unit Calculations

52.36% Solid (Top)
55.88% Solid (Middle)
9.47 kg Light Weight Concrete
12.97 kg Normal Weight Concrete
73.31 e.t.mm. (Top)
78.23 e.t.mm. (Middle)
5908.40 Net Cubic Centimeters



UNIT No. 02-340973

Pear Shaped Cores
26 mm - 38 mm Shell
26 mm Tie

With Extra Mortar Bed

Part Number

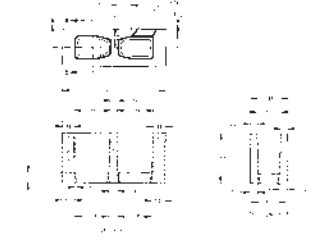
02-338362M
02-338874M0010
02-340971M0100
02-336315M

Description

Plain End Liner
Core Assembly
Stripper Shoe
Removable Plunger

Unit Calculations

58.81% Solid (Top)
62.04% Solid (Middle)
10.47 kg Light Weight Concrete
14.35 kg Normal Weight Concrete
82.34 e.t.mm. (Top)
86.85 e.t.mm. (Middle)
6537.68 Net Cubic Centimeters



UNIT No. 02-324018

2 Core
32 mm to 44 mm Face Shell
26 mm Tie

With Extra Mortar Bed

232 mm High Division Plates
206 mm High Mold

Part Number

02-338898M
02-338899M0010
02-340962M0140
02-323948

Description

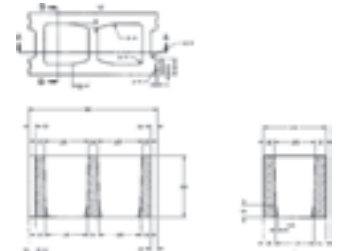
Mold End Liner
Core Assembly
Stripper Shoe
Removable Plunger

Besser Standard 190 mm Wide Units

190 mm Wide x 190 mm High x 390 mm Long
OEBE (Open End Both Ends)

Unit Calculations

50.55% Solid (Top)
53.33% Solid (Middle)
12.47 kg Light Weight Concrete
17.08 kg Normal Weight Concrete
96.04 e.t.mm. (Top)
101.33 e.t.mm. (Middle)
7783.05 Net Cubic Centimeters



UNIT No. 02-338896

Pear Shaped Cores
32 mm to 44 mm Face Shell
26 mm Tie

With Extra Mortar Bed

Part Number

02-338205M
02-338898M
02-338899M0520
02-338901M0900
02-338903M

Description

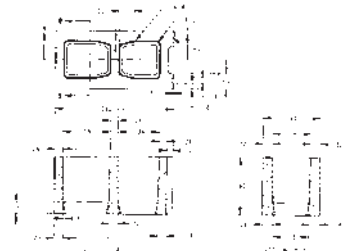
Plain End Liner
Mold End Liner
Core Assembly
Stripper Shoe
Removable Plunger

Besser Standard 190 mm Wide Units

190 mm Wide x 190 mm High x 390 mm Long
PPOE-OEOE (Permanent Plain One End-Open End Other End)

Unit Calculations

50.74% Solid (Top)
53.60% Solid (Middle)
12.29 kg Light Weight Concrete
16.83 kg Normal Weight Concrete
96.41 e.t.mm. (Top)
101.85 e.t.mm. (Middle)
7669.61 Net Cubic Centimeters



UNIT No. 02-495792

Rectangular Cores
32 mm Shell
26 mm Tie

With Extra Mortar Bed

Part Number

02-338898M
02-496134M0010
02-452572M0140
02-323948

Description

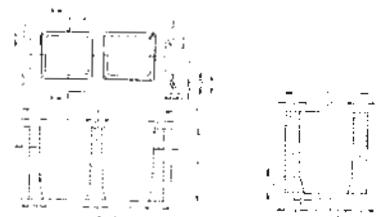
Mold End Liner
Core Assembly
Stripper Shoe
Removable Plunger

Besser Standard 190 mm Wide Units

190 mm Wide x 190 mm High x 390 mm Long
OEBE (Open End Both Ends)

Unit Calculations

47.47% Solid (Top)
50.25% Solid (Middle)
11.59 kg Light Weight Concrete
15.88 kg Normal Weight Concrete
90.19 e.t.mm. (Top)
95.48 e.t.mm. (Middle)
7234.57 Net Cubic Centimeters



Besser Standard 190 mm Wide Units

190 mm Wide x 190 mm High x 390 mm Long
PPBE (Permanent Plain Both Ends)

UNIT No. 02-340964

Pear Shaped Cores
32 mm - 44 mm Shell
26 mm Tie

With Extra Mortar Bed

Part Number

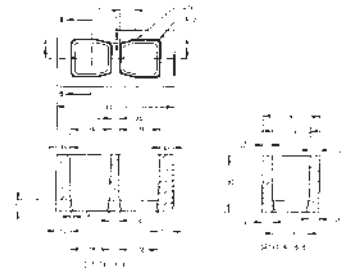
02-338205M
02-338899M0010
02-340692M0100
02-323948

Description

Plain End Liner
Core Assembly
Stripper Shoe
Removable Plunger

Unit Calculations

54.08% Solid (Top)
56.87% Solid (Middle)
13.02 kg Light Weight Concrete
17.83 kg Heavy Weight Concrete
102.76 e.t.mm. (Top)
108.05 e.t.mm. (Middle)
8125.92 Net Cubic Centimeters



UNIT No. 02-356151

Pear Shaped Cores
32 mm to 44 mm Face Shell
26 mm Tie

With Extra Mortar Bed

Part Number

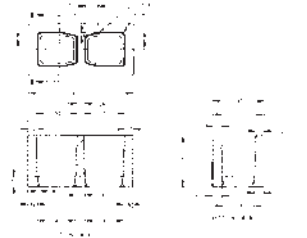
02-338205M
02-338900M0010
02-356152M
02-356156M

Description

Plain End Liner
Core Assembly
Stripper Shoe
Removable Plunger

Unit Calculations

50.94% Solid (Top)
53.88% Solid (Middle)
12.35 kg Light Weight Concrete
16.92 kg Normal Weight Concrete
96.79 e.t.mm. (Top)
102.37 e.t.mm. (Middle)
7711.27 Net Cubic Centimeters



UNIT No. 02-395925

Rectangular Cores
32 mm Shell
26 mm Tie

With Extra Mortar Bed

Part Number

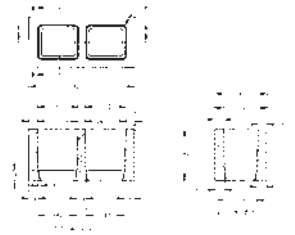
02-338362M
02-395926M0010
02-395490M
02-338214M

Description

Plain End Liner
Core Assembly
Stripper Shoe
Removable Plunger

Unit Calculations

49.32% Solid (Top)
52.26% Solid (Middle)
11.99 kg Light Weight Concrete
16.42 kg Normal Weight Concrete
93.71 e.t.mm. (Top)
99.29 e.t.mm. (Middle)
7483.27 Net Cubic Centimeters



Besser Standard 240 mm Wide Units

240 mm Wide x 190 mm High x 390 mm Long
OEBE (Open End Both Ends)

UNIT No. 02-345321

2 Core
38 mm to 50 mm Face Shell
28 mm Tie

With Extra Mortar Bed

232 mm High Division Plates
206 mm High Mold

Part Number

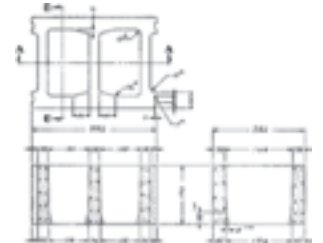
02-345328M
02-345330M0010
02-345332J0140
02-349364M

Description

Mold End Liner
Core Assembly
Stripper Shoe
Removable Plunger

Unit Calculations

48.72% Solid (Top)
51.22% Solid (Middle)
15.09 kg Light Weight Concrete
20.68 kg Normal Weight Concrete
116.93 e.t.mm. (Top)
122.94 e.t.mm. (Middle)
9421.05 Net Cubic Centimeters



Besser Standard 290 mm Wide Units

290 mm Wide x 190 mm High x 390 mm Long
OEBE (Open End Both Ends)

UNIT No. 02-345201

2 Core
38 mm to 50 mm Face Shell
32 mm Tie

With Extra Mortar Bed

232 mm High Division Plates
206 mm High Mold

Part Number

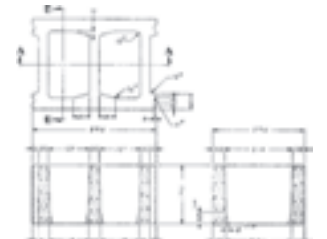
02-345208M
02-345210M0010
02-345212M0140
02-350741M

Description

Mold End Liner
Core Assembly
Stripper Shoe
Removable Plunger

Unit Calculations

46.30% Solid (Top)
48.69% Solid (Middle)
17.33 kg Light Weight Concrete
23.75 kg Normal Weight Concrete
134.28 e.t.mm. (Top)
141.20 e.t.mm. (Middle)
10819.96 Net Cubic Centimeters

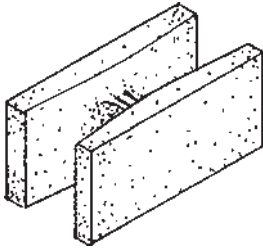


Common Construction Shapes

Request kit #6555 from the Besser mold sales manager, which lists the individual components included in each set of parts together with the concrete unit drawings. (Concrete unit drawing numbers are listed.)

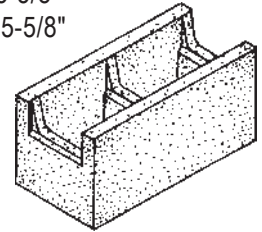
Fully Open End - Bond Beam

- Unit No. 02-412259 7-5/8" x 7-5/8" x 15-5/8"
- Unit No. 02-420870 11-5/8" x 7-5/8" x 15-5/8"



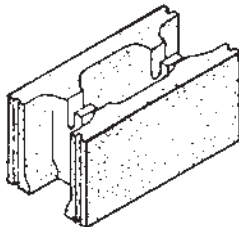
Restricted Bond Beam

- Unit No. 02-384010 5-5/8" x 7-5/8" x 15-5/8"
- Unit No. 02-420110 7-5/8" x 7-5/8" x 15-5/8"
- Unit No. 02-384022 9-5/8" x 7-5/8" x 15-5/8"
- Unit No. 02-373146 11-5/8" x 7-5/8" x 15-5/8"



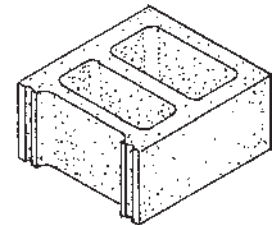
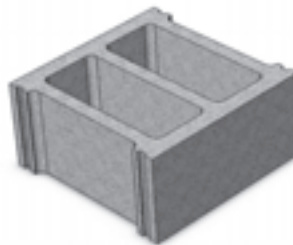
Rebar

- Unit No. 02-410587 7-5/8" x 7-5/8" x 15-5/8"
- Unit No. 02-410590 11-5/8" x 7-5/8" x 15-5/8"



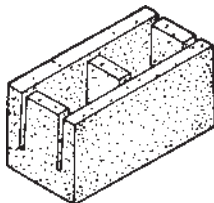
13-5/8" x 15-5/8" Wide Units

- Unit No. 02-395423 13-5/8" x 7-5/8" x 15-5/8"
- Unit No. 02-374888 15-5/8" x 7-5/8" x 15-5/8"
- Unit No. 02-387465 13-5/8" x 7-5/8" x 15-5/8" - OEBE 2 Core
- Unit No. 02-442510 15-5/8" x 7-5/8" x 15-5/8" - OEBE 2 Core



Special Applications Units

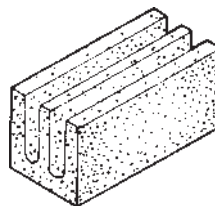
Knock-Out Bond Beam Open Bottom



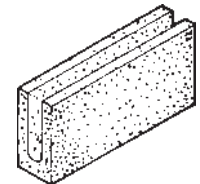
- Unit No. 02-054554 5-5/8" x 7-5/8" x 15-5/8"
 - Unit No. 02-039598 7-5/8" x 7-5/8" x 15-5/8"
 - Unit No. 02-056485 9-5/8" x 7-5/8" x 15-5/8"
 - Unit No. 02-041663 11-5/8" x 7-5/8" x 15-5/8"
 - Unit No. 02-419978 7-5/8" x 7-5/8" x 15-5/8"
- 3-1/2" deep cutout

Bond Beam - Twin Core

- Unit No. 02-051307 9-5/8" x 7-5/8" x 15-5/8"
- Unit No. 02-042644 11-5/8" x 7-5/8" x 15-5/8"

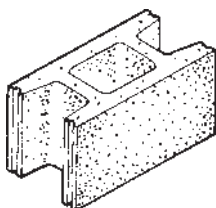


Bond Beam - Single Core



- Unit No. 02-056234 3-5/8" x 7-5/8" x 15-5/8"
- Unit No. 02-056227 5-5/8" x 7-5/8" x 15-5/8"
- Unit No. 02-018594 7-5/8" x 7-5/8" x 15-5/8"

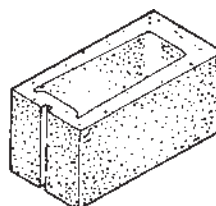
Fully Open Both Ends



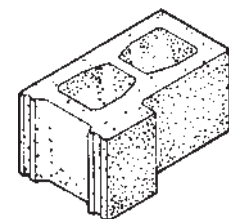
- Unit No. 02-383225 7-5/8" x 7-5/8" x 15-5/8"
- Unit No. 02-410186 9-5/8" x 7-5/8" x 15-5/8"
- Unit No. 02-383228 11-5/8" x 7-5/8" x 15-5/8"

Knock-Out Lintel

- Unit No. 02-317487 7-5/8" x 7-5/8" x 15-5/8"
- Unit No. 02-358876 11-5/8" x 7-5/8" x 15-5/8"



"L" Corner

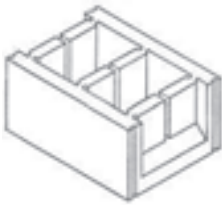


- Unit No. 02-046814 9-5/8" x 7-5/8" x 15-5/8"
- Unit No. 02-046820 11-5/8" x 7-5/8" x 15-5/8"

Special Application Units

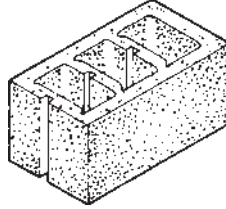
Combination Bond Beam Cap

- Unit No. 02-288662 7-5/8" x 7-5/8" x 15-5/8"
- Unit No. 02-375392 9-5/8" x 7-5/8" x 15-5/8"
- Unit No. 02-273118 11-5/8" x 7-5/8" x 15-5/8"

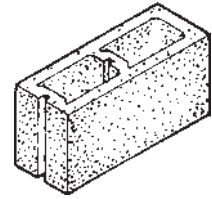


- Unit No. 02-358529 7-5/8" x 7-5/8" x 15-5/8"
- Unit No. 02-362700 9-5/8" x 7-5/8" x 15-5/8"
- Unit No. 02-394297 11-5/8" x 7-5/8" x 15-5/8"

Conduit - 3 Core

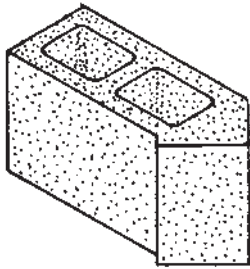


- Unit No. 02-358394 5-5/8" x 7-5/8" x 15-5/8"
- Unit No. 02-281154 7-5/8" x 7-5/8" x 15-5/8"
- Unit No. 02-326849 11-5/8" x 7-5/8" x 15-5/8"

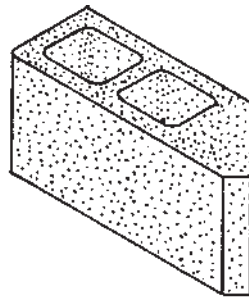


Bevel Units

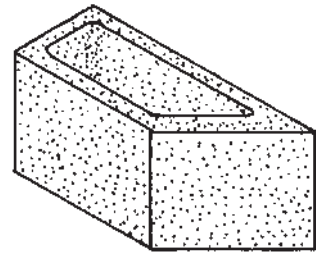
The units shown below are a sample of the many different beveled units used in correctional facilities.
(Concrete unit drawing numbers are listed below.)



Unit No. 02-418284
5-5/8" Wide



Unit No. 02-439346
5-5/8" Wide

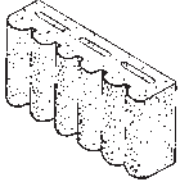
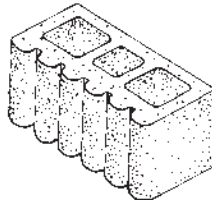
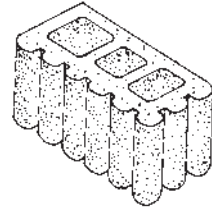
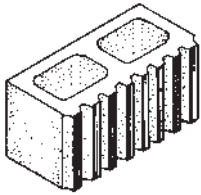
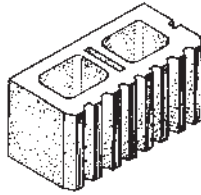
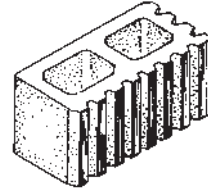
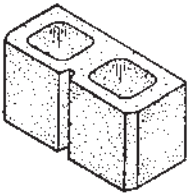
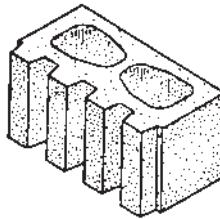
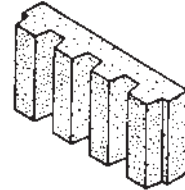
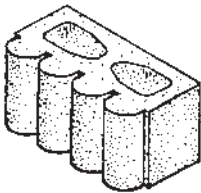
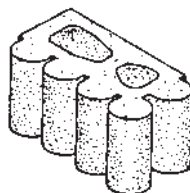


Unit No. 02-430454
5-5/8" Wide

Architectural Machine Fluted Units

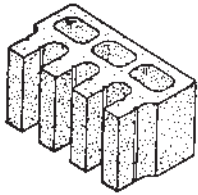
Parts are also available in metric sizes.

(Concrete unit drawing numbers are listed below)

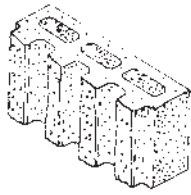
Unit No. 02-333389
3-5/8" WideUnit No. 02-323650
7-5/8" WideUnit No. 02-329627
7-5/8" WideUnit No. 02-436952
7-5/8" WideUnit No. 02-436953
7-5/8" BreakerUnit No. 02-436961
7-5/8" CornerUnit No. 02-299710
7-5/8" WideUnit No. 02-341415
7-5/8" WideUnit No. 02-351587
3-5/8" Wide SolidUnit No. 02-328902
7-5/8" WideUnit No. 02-328931
7-5/8" Corner

Architectural Split Fluted Units

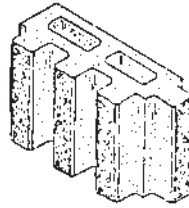
Request kit #5150 from Besser mold sales manager, which lists the components included in each set of parts together with the concrete unit drawings. (Concrete unit drawing numbers are listed below.)



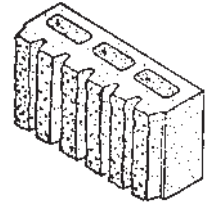
Unit No. 02-277631
3-5/8" Wide + 4" Flute



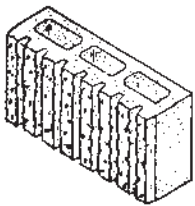
Unit No. 02-315573
3-5/8" Wide + 1-5/8" Flute



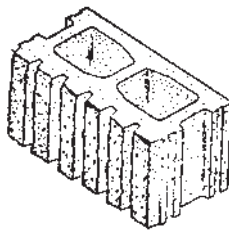
Unit No. 02-381624
3-5/8" Corner + 1-5/8" Flute



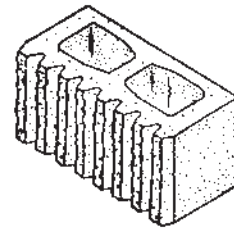
Unit No. 02-350502
3-5/8" Wide + 7/8" Flute



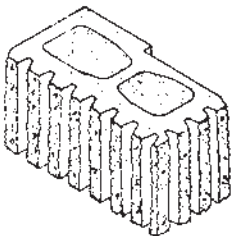
Unit No. 02-307016
3-3/4" Wide + 7/8" Flute



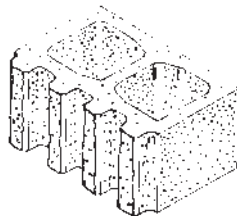
Unit No. 02-354663
7" Wide + 7/8" Flute



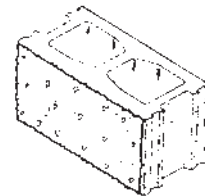
Unit No. 02-409893
7-5/8" Wide + 7/8" Flute



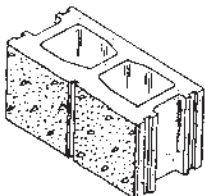
Unit No. 02-409898
7-5/8" Wide + 7/8" Flute
15-5/8" Long + 7/8" Flute



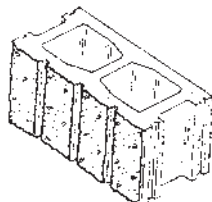
Unit No. 02-311313
7-5/8" Wide + 1-5/8" Flute



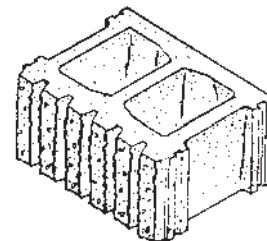
Unit No. 02-371020
7-7/8" Wide Split



Unit No. 02-427877
7-7/8" Wide Split



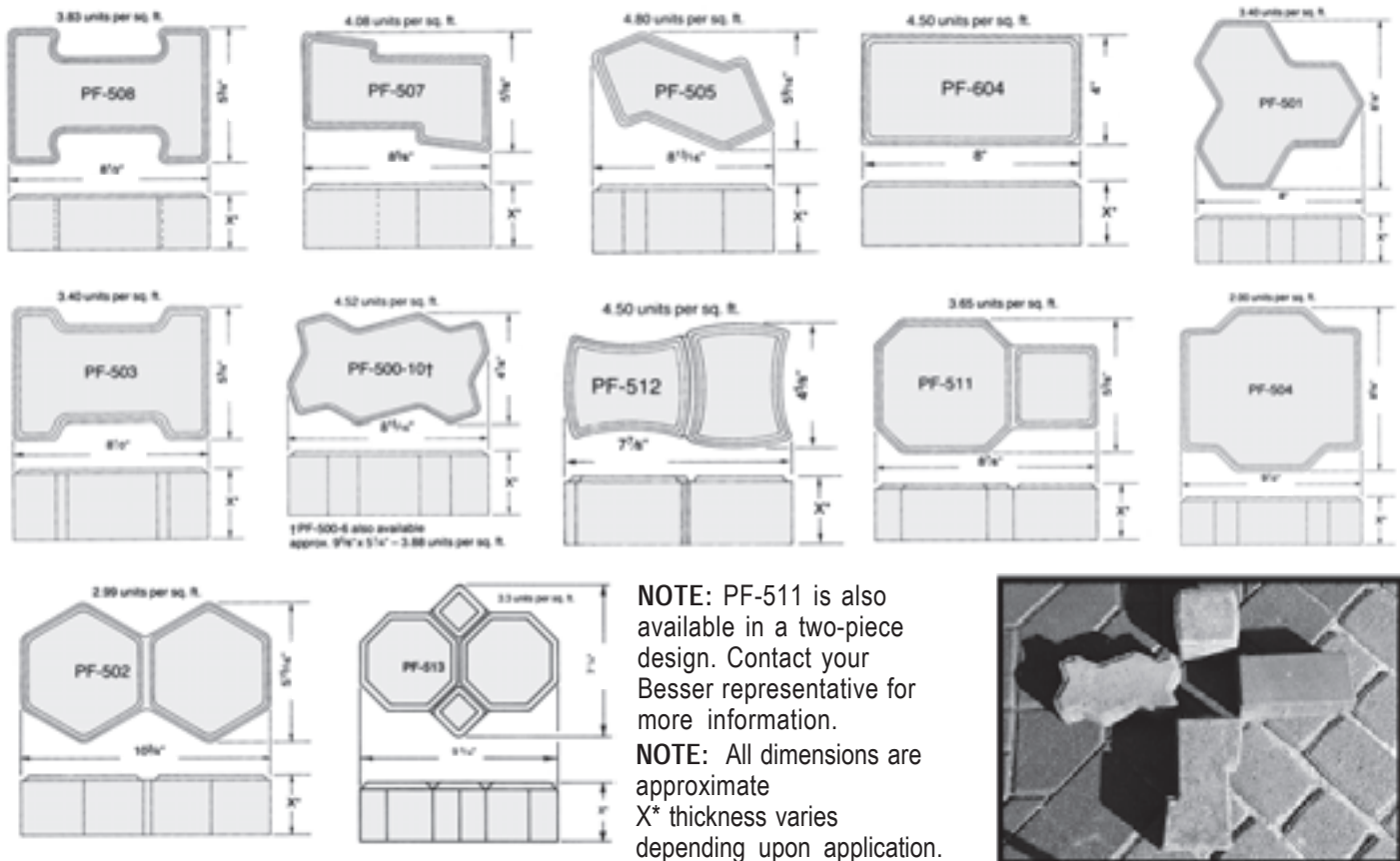
Unit No. 02-427874
7-7/8" Wide Split



Unit No. 02-354739
11" Wide + 7/8" Flute

Concrete Paving Stone

Besser offers a wide variety of paving stone molds for various applications. The most popular styles are shown below. All dimensions are approximate and thicknesses vary depending upon application. **NOTE: PF-511 is a patented unit, therefore mold parts for paving stone PF-511 can only be sold to authorized license holders.**



Heated Stripper Shoe System

If you want to make top quality paving stone on your concrete products machine, use Besser heated stripper shoes. Heated stripper shoes help improve the quality of your paving stone by eliminating material sticking to the shoes and pulling the tops off the paving units. Heated stripper shoes allow you to run a wetter mix, which makes a denser unit with higher compressive strength and less absorption.

Shown is an illustration of a complete heated stripper shoe system. All items may not be necessary for your unit design or plant power requirements. Additional sizes and styles are available. Parts are also available in metric sizes.

| Paving Stone Style Number | Removable Plunger | Stripper Shoe Heater |
|---------------------------|-------------------|----------------------|
| PF-500-6 | 02-361037 | 02-403612 |
| PF-500-10 | 02-361037 | 02-403612 |
| PF-501 | 02-353172 | 02-404033 |
| PF-502 | 02-413202 | 02-410596 |
| PF-503 | 02-361037 | 02-403612 |
| PF-504 | 02-356077M | 02-405383 |
| PF-504-1 | 02-356077M | 02-405383 |
| PF-504-2 | 02-356077M | 02-405384 |
| PF-505 | 02-410027 | 02-421727 |
| PF-507 | 02-361037 | 02-403612 |
| PF-508 | 02-413202 | 02-410596 |
| PF-511 | 02-361037 | 02-403612 |
| PF-512 | 02-413202 | 02-410596 |
| PF-513 | 02-361037 | 02-403612 |
| PF-604 | 02-361037 | 02-403612 |

