

**CANADIAN CONCRETE MASONRY
PRODUCERS ASSOCIATION
LEVY FUND**

**Financial Statements
(Unaudited - See Notice to Reader)
First Quarter ended March 31, 2013**



**CANADIAN CONCRETE MASONRY PRODUCERS ASSOCIATION
LEVY FUND
Contents
(Unaudited - See Notice to Reader)
March 31, 2013**

Notice to Reader	1
Financial Statements	
Statement of Financial Position	2
Statement of Changes in Net Assets	3
Statement of Revenue and Expenses	4
Expenses	5
Note to Financial Statements	6 - 9
Block Sales Report	10 - 11



DIXON, GORDON & CO. LLP

Chartered Accountants

Business Advisors

May 14, 2013

NOTICE TO READER

On the basis of information provided by management, we have compiled the statement of financial position of the Levy Fund of Canadian Concrete Masonry Producers Association as at March 31, 2013 and the statements of revenue and expenses and changes in net assets for the three months then ended.

We have not performed an audit or a review engagement in respect of these financial statements and accordingly, we express no assurance thereon.

Readers are cautioned that these statements may not be appropriate for their purposes.

Respectfully submitted,

Dixon, Gordon + Co. LLP

CHARTERED ACCOUNTANTS
Licensed Public Accountants
Toronto, Canada

**CANADIAN CONCRETE MASONRY PRODUCERS ASSOCIATION
LEVY FUND
Statement of Financial Position
(Unaudited - See Notice to Reader)
March 31, 2013**

	March 31 2013	December 31 2012	March 31 2012
		(Audited)	
Assets			
Cash (a)	\$ 1,049,691	\$ 1,277,901	\$ 947,005
Investment - Guaranteed investment certificates	2,103,341	2,095,917	2,073,697
Accrued levy fees	310,058	409,669	366,681
Prepaid expense	258	279	-
	\$ 3,463,348	\$ 3,783,766	\$ 3,387,383
Liabilities			
Accounts payable	\$ 142,434	\$ 157,721	\$ 195,301
Sales tax payable	14,899	30,185	16,278
	157,333	187,906	211,579
Commitments (pages 6-9)			
Net assets			
Net assets internally restricted (page 3)	3,306,015	3,595,860	3,175,804
	\$ 3,463,348	\$ 3,783,766	\$ 3,387,383

(a) Cash balance in bank account as at March 31, 2013 was \$1,032,980.

See accompanying note

**CANADIAN CONCRETE MASONRY PRODUCERS ASSOCIATION
LEVY FUND**

**Statement of Changes in Net Assets
(Unaudited - See Notice to Reader)
For the three months ended March 31, 2013**

	Year-to-date	
	2013	2012
Net assets, beginning of period	\$ 3,595,860	\$ 3,412,341
Excess of expenses over revenue (page 4)	(289,845)	(236,537)
Net assets, end of period	\$ 3,306,015	\$ 3,175,804

See accompanying note

**CANADIAN CONCRETE MASONRY PRODUCERS ASSOCIATION
LEVY FUND**

Statement of Revenue and Expenses

(Unaudited - See Notice to Reader)

For the three months ended March 31, 2013

	Year-to-date	
	2013	2012
Revenue		
Levy fees	\$ 310,058	\$ 366,681
Interest	7,877	7,473
	317,935	374,154
Expenses (page 5)		
Technical programs	467,724	495,448
Advertising and promotion	134,077	106,400
General and administration	5,979	8,843
	607,780	610,691
Excess of expenses over revenue	\$ (289,845)	\$ (236,537)

See accompanying note

**CANADIAN CONCRETE MASONRY PRODUCERS ASSOCIATION
LEVY FUND**

Expenses

(Unaudited - See Notice to Reader)

For the three months ended March 31, 2013

	Year-to-date	
	2013	2012
Technical programs		
University sponsorships	\$ 175,000	\$ 126,000
Design software support contribution	100,000	100,000
Consulting fees	58,425	57,150
Masonry Design Awards	50,000	-
Centre for Architecture - Athabasca University	-	50,000
National training fund contribution	25,000	25,000
Training Centre block delivery	18,753	16,195
Canadian Standards Association (CSA) A165 Standard development	15,000	15,000
Canadian Masonry Contractors Association (CMCA) conference sponsorship	-	10,000
Masonry Training Scholarships	-	10,000
SMART/dynamics of masonry subscriptions	9,737	-
Educational tools	5,851	3,036
Consulting expenses	4,800	7,474
Development of the National Building Code Canada (NBCC) - sound analysis	4,286	72,000
Leadership in Energy and Environmental Design (LEED) standards development	-	2,200
Foundation Project	462	1,393
National Research Council (NRC) research	410	-
	\$ 467,724	\$ 495,448
Advertising and promotion		
Advertisement - Fire and building code changes	\$ 50,527	\$ -
MasonryWorx Association fees	50,000	50,000
MasonryWorx Association sponsorship	-	25,000
Masonry Alliance for Codes and Standards membership	12,523	12,304
National Concrete Masonry Association fees	10,493	12,343
General advertising	7,948	1,434
North American Masonry Conference sponsorship	-	4,359
The Masonry Society membership fees	1,546	960
Masonry Executives Council fees	1,040	-
	\$ 134,077	\$ 106,400
General and administration		
Accounting and legal	\$ 5,850	\$ 5,600
Travel and meetings	-	3,076
Postage and courier	98	154
Bank charges	31	13
	\$ 5,979	\$ 8,843

See accompanying note

CANADIAN CONCRETE MASONRY PRODUCERS ASSOCIATION

LEVY FUND

Note to Financial Statements

Commitments

(Unaudited - See Notice to Reader)

March 31, 2013

	Total to 2012	Forecast 2013		Total 2013	2014	(1) 2015
		Actual Q1	Forecast Q2-Q4			
(a) University sponsorships for Dalhousie University, University of Alberta, University of British Columbia, University of Calgary, University of Manitoba, McMaster University, University of New Brunswick and University of Saskatchewan, at \$50,000 each per year for five years for a total of \$2,000,000.	\$ 988,000	\$ 175,000	\$ 225,000 (2)	\$ 400,000 (2)	\$ 400,000 (2)	\$ 212,000 (2)
(b) Consulting fees.	235,000 for 2012	58,425	241,575	300,000	300,000	300,000 + each year after
(c) Design software-						
(i) Development of the software in partnership with the Canada Masonry Design Centre.	361,734	-	-	-	-	-
(ii) Funding to National Masonry Design Programs of 50% share of operating costs comprising support for technical assistance and software upgrades.	100,000 for 2012	100,000	-	100,000	100,000	100,000 + each year after
(d) Ontario Masonry Training Centre (OMTC) for \$100,000 in 2013 and each year thereafter in addition to \$975,000 funded over six years to 2012.	975,000	25,000	75,000	100,000	100,000	100,000 + each year after
(e) Marketing of Concrete Masonry Unit (CMU).	-	-	100,000	100,000	100,000	100,000 + each year after
(f) Canadian Masonry Research Council funding.	-	-	100,000	100,000	100,000	-
Subtotals continued on next page	\$ 2,659,734	\$ 358,425	\$ 741,575	\$ 1,100,000	\$ 1,100,000	\$ 812,000

CANADIAN CONCRETE MASONRY PRODUCERS ASSOCIATION

LEVY FUND

Note to Financial Statements (continued)

Commitments

(Unaudited - See Notice to Reader)

March 31, 2013

	Total to 2012	Forecast 2013		Total 2013	2014	(1) 2015
		Actual Q1	Forecast Q2-Q4			
Subtotals carried forward	\$ 2,659,734	\$ 358,425	\$ 741,575	\$ 1,100,000	\$ 1,100,000	\$ 812,000
(g) Membership dues of \$50,000 per year and sponsorships of \$25,000 for 2013 (also in 2010 and 2012) to MasonryWorx Association, a marketing group sponsored in part by the Masonry Contractors of Metropolitan Toronto.	75,000 for 2012	50,000	25,000	75,000	50,000	50,000 + each year after
(h) Materials for Apprenticeship Training and Research for \$75,000 in 2013 and each year thereafter, with \$326,137 funded in 2008-12.	326,137	18,753	56,247	75,000	75,000	75,000 + each year after
(i) Development of the National Building Code Canada (NBCC), in collaboration with NRC for research and development involving the generation and analysis of apparent airborne and sound insulation in concrete and concrete masonry buildings.	166,643	4,286	63,714	68,000	10,000	-
(j) Prolevy fee payable to NCMA at 10% of the levy fees that would be collected by the Association based on a 1.5 cent per unit levy.	57,901 for 2012	10,493	44,507	55,000	55,000 (3)	55,000 (3)
(k) Masonry Design Awards, payable to Ontario Masonry Contractors.	60,000 for 2012	50,000	-	50,000	-	-
(l) Creation of the new Royal Architectural Institute of Canada (RAIC) Centre for Architecture at Athabasca University.	150,000	-	50,000	50,000	50,000	-
(m) Canadian Masonry Symposium, in addition to \$50,000 funded in 2009.	-	-	50,000	50,000	-	-
Subtotals continued on next page	\$ 3,495,415	\$ 491,957	\$ 1,031,043	\$ 1,523,000	\$ 1,340,000	\$ 992,000

CANADIAN CONCRETE MASONRY PRODUCERS ASSOCIATION

LEVY FUND

Note to Financial Statements (continued)

Commitments

(Unaudited - See Notice to Reader)

March 31, 2013

	Total to 2012	Forecast 2013			2014	(1) 2015
		Actual Q1	Forecast Q2-Q4	Total 2013		
Subtotals carried forward	\$ 3,495,415	\$ 491,957	\$ 1,031,043	\$ 1,523,000	\$ 1,340,000	\$ 992,000
(n) Altus/MasonryWorx wall costs study.	17,500	-	17,500	17,500	-	-
(o) CSA standard at \$15,000 per year for five years from 2009 to 2013.	60,000	15,000	-	15,000	-	-
(p) Unit Strength Method Correlation Study.	15,044	-	15,000	15,000	-	-
(q) Masonry Alliance for Codes and Standards membership.	12,304	12,523	-	12,523	12,000	12,000
	for 2012					+ each year after
(r) Wall Draining Project (NRC).	42,537	-	11,000	11,000	-	-
(s) Masonry Training Scholarships.	10,000	-	10,000	10,000	10,000	-
	for 2012					
(t) Canadian Masonry Contractors Association (CMCA) conference sponsorship.	118,185	-	10,000	10,000	10,000	-
(u) Single Wythe energy study.	-	-	10,000	10,000	-	-
(v) SMART/dynamics of masonry subscriptions.	-	9,737	-	9,737	10,000	-
(w) Educational tools.	100,033	5,851	-	5,851	-	-
(x) Foundation Project - McMaster University.	94,791	462	-	462	-	-
(y) National Research Council (NRC) research.	85,013	410	-	410	-	-
(z) Block machine for McMaster University.	197,735	-	-	-	-	-
Subtotals continued on next page	\$ 4,248,557	\$ 535,940	\$ 1,104,543	\$ 1,640,483	\$ 1,382,000	\$ 1,004,000

CANADIAN CONCRETE MASONRY PRODUCERS ASSOCIATION

LEVY FUND

Note to Financial Statements (continued)

Commitments

(Unaudited - See Notice to Reader)

March 31, 2013

	Total to 2012	Forecast 2013			2014	(1) 2015
		Actual Q1	Forecast Q2-Q4	Total 2013		
Subtotals carried forward	\$ 4,248,557	\$ 535,940	\$ 1,104,543	\$ 1,640,483	\$ 1,382,000	\$ 1,004,000
(aa) Funding to Dr. Svetlana Brzev and Dr. Don Anderson for a Seismic Design Guide.	30,717	-	-	-	-	-
(ab) Cement study.	30,000	-	-	-	-	-
(ac) Masonry Apprenticeship Training Textbook.	25,000	-	-	-	-	-
(ad) National Sciences and Engineering Research Council (NSERC) funding.	15,000	-	-	-	-	-
(ae) Development of Canadian Framework and Guide regarding Apparent Sound Insulation in Construction - Phase 1.	10,000	-	-	-	-	-
(af) Research equipment contribution to British Columbia Institute of Technology.	10,000	-	-	-	-	-
(ag) Leadership in Energy and Environmental Design (LEED) standards development.	2,200	-	-	-	-	-
Totals	\$ 4,371,474	\$ 535,940	\$ 1,104,543	\$ 1,640,483	\$ 1,382,000	\$ 1,004,000

(1)

(1) Annual totals after 2015:

2016 \$792,000

2017 and each year thereafter \$792,000

(2) Not all universities have applied or will meet the criteria for funds to be released.

(3) Payment amount based on unit block sales.

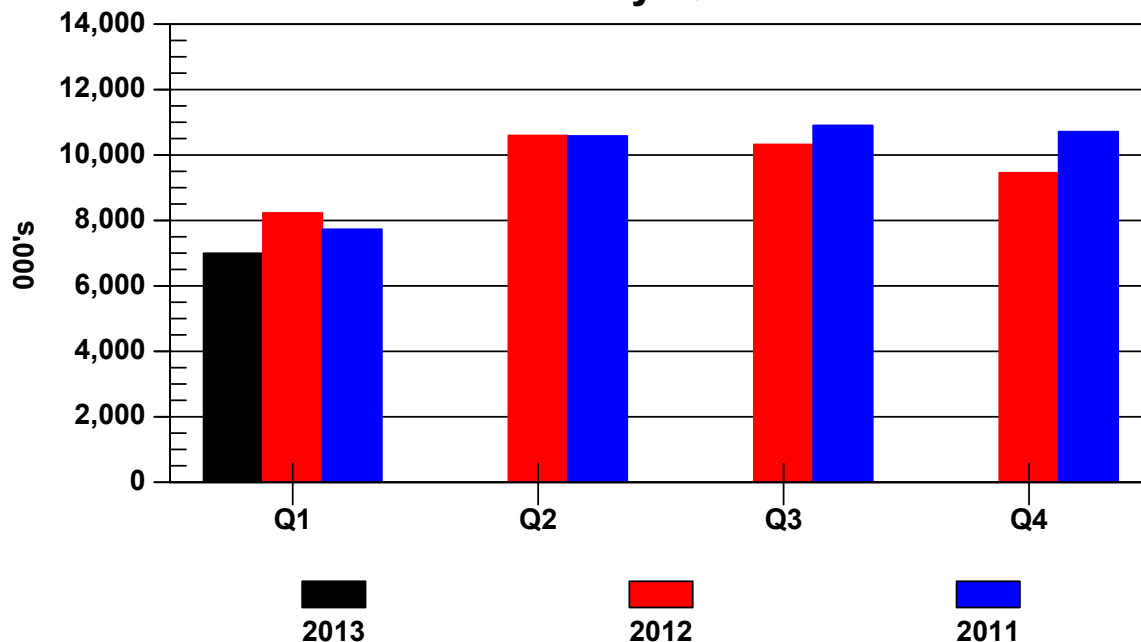
**CANADIAN CONCRETE MASONRY PRODUCERS ASSOCIATION
 LEVY FUND
 DRAFT Block Sales Report
 (Unaudited - See Notice to Reader)
 For the three months ended March 31, 2013**

	Q1
BLOCK SALES	
Quarter totals	
Standard	4,790,023
Lightweight	1,890,128
Architectural	315,324
Total	6,995,475
LEVY FEES	
	(1)
Quarter totals	
Gross amount	\$ 345,035
Less: Administration	(34,977)
Net Levy fees	\$ 310,058

(1) Levy fees are based on a flat per block rate of 5.0¢ less 0.5¢ for administration. Final total levy amounts include certain levy balances at the pre-2008 net rate of 1.5¢ (2.0¢ less 0.5¢) reflecting charges to respective member customers at the former 2.0¢ per block rate.

**CANADIAN CONCRETE MASONRY PRODUCERS ASSOCIATION
 LEVY FUND
 DRAFT Block Sales Report (continued)
 (Unaudited - See Notice to Reader)
 For the three months ended March 31, 2013**

Block Sales by Quarter



(000's)	Q1	Q2	Q3	Q4
Quarter totals				
2013	6,995	N/A	N/A	N/A
2012	8,229	10,595	10,322	9,455
2011	7,730	10,578	10,901	10,710
Year-to-date totals				
2013	6,995	N/A	N/A	N/A
2012	8,229	18,824	29,146	38,601
2011	7,730	18,308	29,209	39,919