

**CANADIAN CONCRETE MASONRY  
PRODUCERS ASSOCIATION  
LEVY FUND**

**Financial Statements  
(Unaudited - See Notice to Reader)**

**Second Quarter ended June 30, 2012**



**CANADIAN CONCRETE MASONRY PRODUCERS ASSOCIATION  
LEVY FUND  
Contents  
(Unaudited - See Notice to Reader)  
June 30, 2012**

<b>Notice to Reader</b> .....	1
<b>Financial Statements</b>	
Statement of Financial Position .....	2
Statement of Changes in Net Assets .....	3
Statement of Revenue and Expenses .....	4
Expenses .....	5
Note to Financial Statements .....	6 - 9
<b>Block Sales Report</b> .....	10 - 11



**DIXON, GORDON & CO. LLP**  
CHARTERED ACCOUNTANTS

August 14, 2012

## **NOTICE TO READER**

On the basis of information provided by management, we have compiled the statement of financial position of the Levy Fund of Canadian Concrete Masonry Producers Association as at June 30, 2012 and the statements of revenue and expenses and changes in net assets for the six months then ended.

We have not performed an audit or a review engagement in respect of these financial statements and accordingly, we express no assurance thereon.

Readers are cautioned that these statements may not be appropriate for their purposes.

Respectfully submitted,

*Dixon, Gordon + Co. LLP*

CHARTERED ACCOUNTANTS  
Licensed Public Accountants  
Toronto, Canada

**CANADIAN CONCRETE MASONRY PRODUCERS ASSOCIATION  
LEVY FUND  
Statement of Financial Position  
(Unaudited - See Notice to Reader)  
June 30, 2012**

	<b>June 30 2012</b>	<b>December 31 2011</b>	<b>June 30 2011</b>
		(Audited)	
<b>Assets</b>			
Cash (a)	\$ 894,482	\$ 1,071,878	\$ 517,836
Investment - Guaranteed investment certificates	2,080,739	2,066,677	2,048,395
Accrued levy fees	472,689	434,038	469,720
Prepaid expense	-	202	-
	<b>\$ 3,447,910</b>	<b>\$ 3,572,795</b>	<b>\$ 3,035,951</b>
<b>Liabilities</b>			
Accounts payable	\$ 38,261	\$ 115,597	\$ 76,693
Sales tax payable	32,271	44,857	31,644
	<b>70,532</b>	<b>160,454</b>	<b>108,337</b>
<b>Commitments</b> (pages 6-9)			
<b>Net assets</b>			
Net assets internally restricted (page 3)	3,377,378	3,412,341	2,927,614
	<b>\$ 3,447,910</b>	<b>\$ 3,572,795</b>	<b>\$ 3,035,951</b>

(a) Cash balance in bank account as at June 30, 2012 was \$903,746.

See accompanying note

**CANADIAN CONCRETE MASONRY PRODUCERS ASSOCIATION  
LEVY FUND**

**Statement of Changes in Net Assets  
(Unaudited - See Notice to Reader)**

**For the three and six months ended June 30, 2012**

	Second Quarter		Year-to-date	
	2012	2011	2012	2011
<b>Net assets, beginning of period</b>	<b>\$ 3,185,804</b>	\$ 2,636,140	<b>\$ 3,412,341</b>	\$ 2,770,969
Excess of revenue over expenses (expenses over revenue) (page 4)	<b>191,574</b>	291,474	<b>(34,963)</b>	156,645
<b>Net assets, end of period</b>	<b>\$ 3,377,378</b>	\$ 2,927,614	<b>\$ 3,377,378</b>	\$ 2,927,614

See accompanying note

**CANADIAN CONCRETE MASONRY PRODUCERS ASSOCIATION  
LEVY FUND**

**Statement of Revenue and Expenses  
(Unaudited - See Notice to Reader)**

**For the three and six months ended June 30, 2012**

	Second Quarter		Year-to-date	
	2012	2011	2012	2011
<b>Revenue</b>				
Levy fees	\$ 473,678	\$ 469,720	\$ 840,359	\$ 814,488
Interest	7,496	2,900	14,969	9,321
	<b>481,174</b>	472,620	<b>855,328</b>	823,809
<b>Expenses (page 5)</b>				
Technical programs	228,941	149,881	714,389	540,917
Advertising and promotion	54,926	24,139	161,326	109,614
General and administration	5,733	7,126	14,576	16,633
	<b>289,600</b>	181,146	<b>890,291</b>	667,164
<b>Excess of revenue over expenses (expenses over revenue)</b>	<b>\$ 191,574</b>	\$ 291,474	<b>\$ (34,963)</b>	\$ 156,645

See accompanying note

**CANADIAN CONCRETE MASONRY PRODUCERS ASSOCIATION  
LEVY FUND**

**Expenses**

**(Unaudited - See Notice to Reader)**

**For the three and six months ended June 30, 2012**

	Second Quarter		Year-to-date	
	2012	2011	2012	2011
<b>Technical programs</b>				
University sponsorships	\$ 35,000	\$ -	\$ 161,000	\$ 106,000
Consulting fees	67,375	80,150	124,525	143,300
Design software development contribution	-	-	100,000	100,750
Development of the National Building Code Canada (NBCC) - sound analysis	1,599	-	73,599	-
Masonry Design Awards	50,000	-	50,000	-
National training fund contribution	25,000	25,000	50,000	50,000
Centre for Architecture - Athabasca University	-	-	50,000	50,000
Training Centre block delivery	25,543	6,694	41,738	27,714
Consulting expenses	11,912	21,459	19,386	31,575
Canadian Standards Association (CSA) A165 Standard development	-	-	15,000	15,000
National Research Council (NRC) research	-	13,590	-	13,590
Wall Drainage Project (NRC)	12,042	2,988	12,042	2,988
Canadian Masonry Contractors Association (CMCA) conference sponsorship	-	-	10,000	-
Educational tools	-	-	3,036	-
Leadership in Energy and Environmental Design (LEED) standards development	-	-	2,200	-
Foundation Project	470	-	1,863	-
	<b>\$ 228,941</b>	<b>\$ 149,881</b>	<b>\$ 714,389</b>	<b>\$ 540,917</b>
<b>Advertising and promotion</b>				
MasonryWorx Association fees	\$ -	\$ -	\$ 50,000	\$ 50,000
General advertising	38,658	1,000	40,092	2,822
MasonryWorx Association sponsorship	-	-	25,000	-
National Concrete Masonry Association fees	15,893	15,866	28,236	27,461
Masonry Alliance for Codes and Standards membership	-	-	12,304	12,029
The Masonry Society sponsorship - North American Masonry Conference	-	4,880	-	4,880
North American Masonry Conference sponsorship	-	-	4,359	10,029
Masonry Executives Council fees	-	993	-	993
The Masonry Society membership fees	-	1,400	960	1,400
Website	375	-	375	-
	<b>\$ 54,926</b>	<b>\$ 24,139</b>	<b>\$ 161,326</b>	<b>\$ 109,614</b>
<b>General and administration</b>				
Accounting and legal	\$ 5,600	\$ 5,450	\$ 11,200	\$ 12,450
Travel and meetings	-	1,313	3,076	3,528
Postage and courier	110	285	264	530
Bank charges	23	78	36	125
	<b>\$ 5,733</b>	<b>\$ 7,126</b>	<b>\$ 14,576</b>	<b>\$ 16,633</b>

See accompanying note

# CANADIAN CONCRETE MASONRY PRODUCERS ASSOCIATION

## LEVY FUND

### Note to Financial Statements

#### Commitments

(Unaudited - See Notice to Reader)

June 30, 2012

	Total to 2011	Forecast 2012		Total 2012	2013	(1) 2014
		Actual Q2 YTD	Forecast Q3-Q4			
(a) University sponsorships for Dalhousie University, University of Alberta, University of British Columbia, University of Calgary, University of Manitoba, McMaster University, University of New Brunswick and University of Saskatchewan, at \$50,000 each per year for five years for a total of \$2,000,000.	\$ 762,000	\$ 161,000	\$ 477,000 (2)	\$ 638,000 (2)	\$ 400,000 (2)	\$ 150,000 in 2014 + \$50,000 in 2015 (2)
(b) Consulting fees.	246,525 for 2011	124,525	175,475	300,000	300,000	300,000 + each year after
(c) Development of the National Building Code Canada (NBCC), in collaboration with NRC for research and development involving the generation and analysis of apparent airborne and sound insulation in concrete and concrete masonry buildings.	-	73,599	119,401	193,000	42,000	10,000
(d) Design software-						
(i) Development of the software in partnership with the Canada Masonry Design Centre.	361,734	-	-	-	-	-
(ii) Funding to National Masonry Design Programs of 50% share of operating costs comprising support for technical assistance and software upgrades.	100,750	100,000	-	100,000	100,000	100,000 + each year after
(e) Ontario Masonry Training Centre (OMTC) for \$100,000 in 2012 and each year thereafter in addition to \$875,000 funded over four years to 2011.	875,000	50,000	50,000	100,000	100,000	100,000 + each year after
(f) Marketing of Basement concrete masonry unit (CMU).	-	-	100,000	100,000	100,000	100,000 + each year after
Subtotals continued on next page	\$ 2,346,009	\$ 509,124	\$ 921,876	\$ 1,431,000	\$ 1,042,000	\$ 760,000



# CANADIAN CONCRETE MASONRY PRODUCERS ASSOCIATION

## LEVY FUND

### Note to Financial Statements (continued)

#### Commitments

(Unaudited - See Notice to Reader)

June 30, 2012

	Total to 2011	Forecast 2012		Total 2012	2013	(1) 2014
		Actual Q2 YTD	Forecast Q3-Q4			
Subtotals carried forward	\$ 2,346,009	\$ 509,124	\$ 921,876	\$ 1,431,000	\$ 1,042,000	\$ 760,000
(g) Canadian Masonry Research Council funding.	-	-	100,000	100,000	100,000	100,000
(h) Membership dues of \$50,000 per year and sponsorships of \$25,000 for each of 2012 and 2013 (also in 2010) to MasonryWorx Association, a marketing group sponsored in part by the Masonry Contractors of Metropolitan Toronto.	50,000 for 2011	75,000	-	75,000	75,000	50,000 + each year after
(i) Prolevy fee payable to NCMA at 10% of the levy fees that would be collected by the Association based on a 1.5 cent per unit levy.	59,879 for 2011	28,236	36,764	65,000	65,000 (3)	65,000 (3)
(j) Materials for Apprenticeship Training and Research for \$50,000 in 2012 and each year thereafter, with \$247,708 funded in 2008-11.	247,708	41,738	8,262	50,000	50,000	50,000 + each year after
(k) Creation of the new Royal Architectural Institute of Canada (RAIC) Centre for Architecture at Athabasca University.	100,000	50,000	-	50,000	50,000	50,000
(l) Masonry Design Awards, payable to Ontario Masonry Contractors.	71,000	50,000	-	50,000	50,000	-
(m) Wall Draining Project (NRC).	18,537	12,042	22,958	35,000	-	-
(n) Altus/MasonryWorx wall costs study.	-	-	35,000	35,000	-	-
(o) CSA standard at \$15,000 per year for five years from 2009 to 2013.	45,000	15,000	-	15,000	15,000	-
Subtotals continued on next page	\$ 2,938,133	\$ 781,140	\$ 1,124,860	\$ 1,906,000	\$ 1,447,000	\$ 1,075,000

# CANADIAN CONCRETE MASONRY PRODUCERS ASSOCIATION

## LEVY FUND

### Note to Financial Statements (continued)

#### Commitments

(Unaudited - See Notice to Reader)

June 30, 2012

	Total to 2011	Forecast 2012		Total 2012	2013	(1) 2014
		Actual Q2 YTD	Forecast Q3-Q4			
Subtotals carried forward	\$ 2,938,133	\$ 781,140	\$ 1,124,860	\$ 1,906,000	\$ 1,447,000	\$ 1,075,000
(p) Unit Strength Method Correlation Study.	15,044	-	15,000	15,000		-
(q) Masonry Alliance for Codes and Standards membership.	24,974	12,304	-	12,304	12,000	12,000 + each year after
(r) Masonry Training Scholarships.	10,000 for 2011	-	10,000	10,000	10,000	10,000
(s) Canadian Masonry Contractors Association (CMCA) conference sponsorship.	93,185	10,000	-	10,000	-	-
(t) Single Wythe energy study.	-	-	10,000	10,000	-	-
(u) Educational tools.	91,173	3,036	-	3,036	-	-
(v) Leadership in Energy and Environmental Design (LEED) standards development.	-	2,200	-	2,200	-	-
(w) Foundation Project - McMaster University.	90,484	1,863	-	1,863	-	-
(x) Block machine for McMaster University.	197,735	-	-	-	-	-
(y) National Research Council (NRC) research.	85,013	-	-	-	-	-
(z) Canadian Masonry Symposium Sponsorship.	50,000	-	-	-	-	-
(aa) Funding to Dr. Svetlana Brzev and Dr. Don Anderson for a Seismic Design Guide.	30,717	-	-	-	-	-
(ab) Cement study.	30,000	-	-	-	-	-
(ac) Masonry Apprenticeship Training Textbook.	25,000	-	-	-	-	-
Subtotals continued on next page	\$ 3,681,458	\$ 810,543	\$ 1,159,860	\$ 1,970,403	\$ 1,469,000	\$ 1,097,000

**CANADIAN CONCRETE MASONRY PRODUCERS ASSOCIATION**

**LEVY FUND**

**Note to Financial Statements (continued)**

**Commitments**

**(Unaudited - See Notice to Reader)**

**June 30, 2012**

	Total to 2011	Forecast 2012		Total 2012	2013	(1) 2014
		Actual Q2 YTD	Forecast Q3-Q4			
Subtotals carried forward	\$ 3,681,458	\$ 810,543	\$ 1,159,860	\$ 1,970,403	\$ 1,469,000	\$ 1,097,000
(ad) National Sciences and Engineering Research Council (NSERC) funding.	15,000	-	-	-	-	-
(ae) Research equipment contribution to British Columbia Institute of Technology.	10,000	-	-	-	-	-
<b>Totals</b>	<b>\$ 3,706,458</b>	<b>\$ 810,543</b>	<b>\$ 1,159,860</b>	<b>\$ 1,970,403</b>	<b>\$ 1,469,000</b>	<b>\$ 1,097,000</b>

(1)

(1) Annual totals after 2014:

2015 \$827,000

2016 and each year thereafter \$777,000

(2) Not all universities have applied or will meet the criteria for funds to be released.

(3) Payment amount based on unit block sales.

**CANADIAN CONCRETE MASONRY PRODUCERS ASSOCIATION****LEVY FUND****Block Sales Report****(Unaudited - See Notice to Reader)****For the three and six months ended June 30, 2012**

	<b>Q1</b>	<b>Q2</b>
<b>BLOCK SALES</b>		
<b>Quarter totals</b>		
Standard	5,261,385	7,593,786
Lightweight	2,510,190	2,406,294
Architectural	457,021	595,171
<b>Total</b>	<b>8,228,596</b>	<b>10,595,251</b>
<b>Year-to-date totals</b>		
Standard	5,261,385	12,855,171
Lightweight	2,510,190	4,916,484
Architectural	457,021	1,052,192
<b>Total</b>	<b>8,228,596</b>	<b>18,823,847</b>
<b>LEVY FEES</b>		
	(1)	
<b>Quarter totals</b>		
Gross amount	\$ 407,824	\$ 526,654
Less: Administration	(41,143)	(52,976)
<b>Net Levy fees</b>	<b>\$ 366,681</b>	<b>\$ 473,678</b>
<b>Year-to-date totals</b>		
Gross amount	\$ 407,824	\$ 934,478
Less: Administration	(41,143)	(94,119)
<b>Net Levy fees</b>	<b>\$ 366,681</b>	<b>\$ 840,359</b>

(1) Levy fees are based on a flat per block rate of 5.0¢ less 0.5¢ for administration. Final total levy amounts include certain levy balances at the pre-2008 net rate of 1.5¢ (2.0¢ less 0.5¢) reflecting charges to respective member customers at the former 2.0¢ per block rate.

**CANADIAN CONCRETE MASONRY PRODUCERS ASSOCIATION**

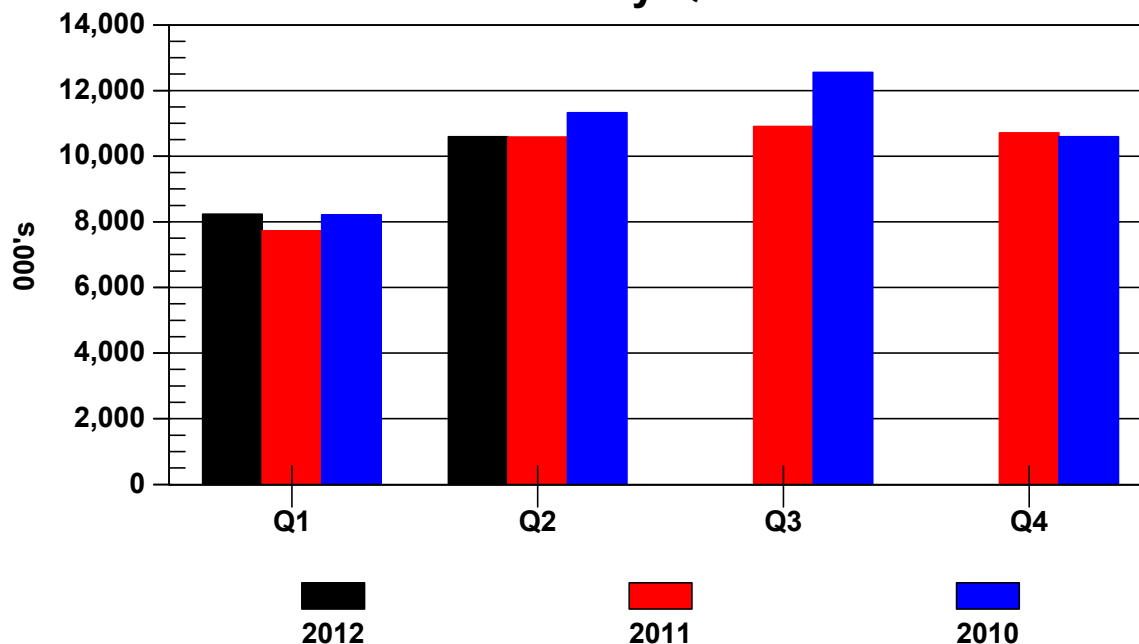
**LEVY FUND**

Block Sales Report (continued)

(Unaudited - See Notice to Reader)

For the three and six months ended June 30, 2012

**Block Sales by Quarter**



(000's)	Q1	Q2	Q3	Q4
<b>Quarter totals</b>				
2012	8,229	10,595	N/A	N/A
2011	7,730	10,578	10,901	10,710
2010	8,214	11,319	12,548	10,592
<b>Year-to-date totals</b>				
2012	8,229	18,824	N/A	N/A
2011	7,730	18,308	29,209	39,919
2010	8,214	19,533	32,081	42,673